



Since January 2020 Elsevier has created a COVID-19 resource centre with free information in English and Mandarin on the novel coronavirus COVID-19. The COVID-19 resource centre is hosted on Elsevier Connect, the company's public news and information website.

Elsevier hereby grants permission to make all its COVID-19-related research that is available on the COVID-19 resource centre - including this research content - immediately available in PubMed Central and other publicly funded repositories, such as the WHO COVID database with rights for unrestricted research re-use and analyses in any form or by any means with acknowledgement of the original source. These permissions are granted for free by Elsevier for as long as the COVID-19 resource centre remains active.

# Clinical course of severe and critical coronavirus disease 2019 in hospitalized pregnancies: a United States cohort study



Rebecca A. M. Pierce-Williams, DO; Julia Burd, MD; Laura Felder, MD; Rasha Khoury, MD, MPH; Peter S. Bernstein, MD, MPH; Karina Avila, MPH; Christina A. Penfield, MD, MPH; Ashley S. Roman, MD, MPH; Chelsea A. DeBolt, MD; Joanne L. Stone, MD; Angela Bianco, MD; Adina R. Kern-Goldberger, MD, MPH; Adi Hirshberg, MD; Sindhu K. Srinivas, MD, MSCE; Jenani S. Jayakumar, MD; Justin S. Brandt, MD; Hannah Anastasio, MD; Meredith Birsner, MD; Devon S. O'Brien, MD; Harish M. Sedev, MD; Cara D. Dolin, MD, MPH; William T. Schnetzler, MD; Anju Suhag, MD; Shabani Ahluwalia, DO; Reshama S. Navathe, MD; Adeeb Khalifeh, MD; Kathryn Anderson, BA; Vincenzo Berghella, MD

**BACKGROUND:** The coronavirus disease 2019 pandemic has had an impact on healthcare systems around the world with 3 million people contracting the disease and 208,000 cases resulting in death as of this writing. Information regarding coronavirus infection in pregnancy is still limited.

**OBJECTIVE:** This study aimed to describe the clinical course of severe and critical coronavirus disease 2019 in hospitalized pregnant women with positive laboratory testing for severe acute respiratory syndrome coronavirus 2.

**STUDY DESIGN:** This is a cohort study of pregnant women with severe or critical coronavirus disease 2019 hospitalized at 12 US institutions between March 5, 2020, and April 20, 2020. Severe disease was defined according to published criteria as patient-reported dyspnea, respiratory rate >30 per minute, blood oxygen saturation  $\leq$ 93% on room air, ratio of partial pressure of arterial oxygen to the fraction of inspired oxygen <300 mm Hg, or lung infiltrates >50% within 24–48 hours on chest imaging. Critical disease was defined as respiratory failure, septic shock, or multiple organ dysfunction or failure. Women were excluded from the study if they had presumed coronavirus disease 2019, but laboratory testing was negative. The primary outcome was median duration from hospital admission to discharge. Secondary outcomes included need for supplemental oxygen, intubation, cardiomyopathy, cardiac arrest, death, and timing of delivery. The clinical courses are described by the median disease day on which these outcomes occurred after the onset of symptoms. Treatment and neonatal outcomes are also reported.

**RESULTS:** Of 64 hospitalized pregnant women with coronavirus disease 2019, 44 (69%) had severe disease, and 20 (31%) had critical disease. The following preexisting comorbidities were observed: 25% had a pulmonary condition, 17% had cardiac disease, and the mean body mass index was 34 kg/m<sup>2</sup>. Gestational age was at a mean of 29±6 weeks at symptom onset and a mean of 30±6 weeks at hospital admission, with a median disease day 7 since first symptoms. Most women (81%) were treated with

hydroxychloroquine; 7% of women with severe disease and 65% of women with critical disease received remdesivir. All women with critical disease received either prophylactic or therapeutic anticoagulation during their admission. The median duration of hospital stay was 6 days (6 days [severe group] and 10.5 days [critical group];  $P=.01$ ). Intubation was usually performed around day 9 on patients who required it, and peak respiratory support for women with severe disease was performed on day 8. In women with critical disease, prone positioning was required in 20% of cases, the rate of acute respiratory distress syndrome was 70%, and reintubation was necessary in 20%. There was 1 case of maternal cardiac arrest, but there were no cases of cardiomyopathy or maternal death. Thirty-two of 64 (50%) women with coronavirus disease 2019 in this cohort delivered during their hospitalization (34% [severe group] and 85% [critical group]). Furthermore, 15 of 17 (88%) pregnant women with critical coronavirus disease 2019 delivered preterm during their disease course, with 16 of 17 (94%) pregnant women giving birth through cesarean delivery; overall, 15 of 20 (75%) women with critical disease delivered preterm. There were no stillbirths or neonatal deaths or cases of vertical transmission.

**CONCLUSION:** In pregnant women with severe or critical coronavirus disease 2019, admission into the hospital typically occurred about 7 days after symptom onset, and the duration of hospitalization was 6 days (6 [severe group] vs 12 [critical group]). Women with critical disease had a high rate of acute respiratory distress syndrome, and there was 1 case of cardiac arrest, but there were no cases of cardiomyopathy or maternal mortality. Hospitalization of pregnant women with severe or critical coronavirus disease 2019 resulted in delivery during the clinical course of the disease in 50% of this cohort, usually in the third trimester. There were no perinatal deaths in this cohort.


**Key words:** coronavirus, COVID-19, pregnancy, SARS-CoV-2

**Cite this article as:** Pierce-Williams RAM, Burd J, Felder L, et al. Clinical course of severe and critical coronavirus disease 2019 in hospitalized pregnancies: a United States cohort study. *Am J Obstet Gynecol MFM* 2020;2:100134.

2589-9333/\$36.00

© 2020 Elsevier Inc. All rights reserved.

<https://doi.org/10.1016/j.ajogmf.2020.100134>

 Click Supplemental Materials under article title in Contents at [ajog.org](https://www.ajog.org)

## Introduction

The 2019 novel coronavirus, severe acute respiratory syndrome coronavirus 2 (SARS-CoV-2), has caused a coronavirus disease 2019 (COVID-19) pandemic, with 3 million people contracting the disease and 208,131 cases resulting in death globally at the time of this writing (April 27, 2020).<sup>1</sup> COVID-19 is usually mild in 81%, severe in 14%, and critical in 5% of nonpregnant patients,<sup>2</sup> percentages

which are similar (86%, 9%, and 5%, respectively) to pregnant women in early reports.<sup>3</sup>

The clinical course of severe or critical COVID-19 in nonpregnant patients includes hospital admission occurring at a median of 7 days after the onset of symptoms, dyspnea on day 8, sepsis on day 9, acute respiratory distress syndrome (ARDS) on days 9–12, intensive care unit (ICU) admission and mechanical ventilation on days 10.5–12,

## AJOG MFM at a Glance

**Why was this study conducted?**

This study aimed to describe the clinical course of severe or critical coronavirus disease 2019 (COVID-19) in hospitalized pregnant patients so that healthcare providers have guidance regarding antepartum and delivery management.

**Key findings**

Pregnant women with severe or critical COVID-19 were admitted to the hospital about 7 days after the onset of symptoms and stayed in the hospital for 6 days (median, 6 days [severe group] and 10.5 days [critical group];  $P=.01$ ). Intubation was usually performed around day 9 on patients who required it; peak respiratory support for women with severe conditions was performed on day 8. Hospitalization of pregnant women with severe or critical COVID-19 resulted in delivery during the course of the disease in 50% of this cohort. Furthermore, 75% of all women with critical COVID-19 had mostly iatrogenic preterm delivery.

**What does this add to what is known?**

These data add significantly to the body of literature regarding the clinical course of severe or critical COVID-19 in pregnancy and suggest that the clinical course of severe or critical COVID-19 in hospitalized pregnant women may be shorter than in hospitalized nonpregnant patients.

and death or discharge for survivors on day 21; the median length of hospital stay in nonpregnant patients is about 12 days.<sup>4–6</sup>; however, there is very limited information regarding the clinical course of severe and critical COVID-19 in hospitalized pregnant women. In a cohort of 15 pregnant women in China, the interval from symptom onset to admission varied from 2 to 10 days, and no other clinical course details were provided.<sup>7</sup>

Knowledge of the clinical course of the disease is vital to answering questions about the management of pregnant women with COVID-19. The physiological changes in pregnancy affect lung volumes and immune response and therefore have the potential to affect the clinical course of COVID-19 in pregnancy. To be able to answer questions about optimal management, timing of delivery, and various medications used for obstetrical indications, the clinical course of the maternal disease must be understood. The physiological changes in pregnancy, particularly those related to disease severity, progression, and outcomes, also need to be more clearly elucidated.

This study aimed to describe the clinical course of severe and critical

COVID-19 in pregnant women during hospitalization.

## Materials and Methods

### Study design

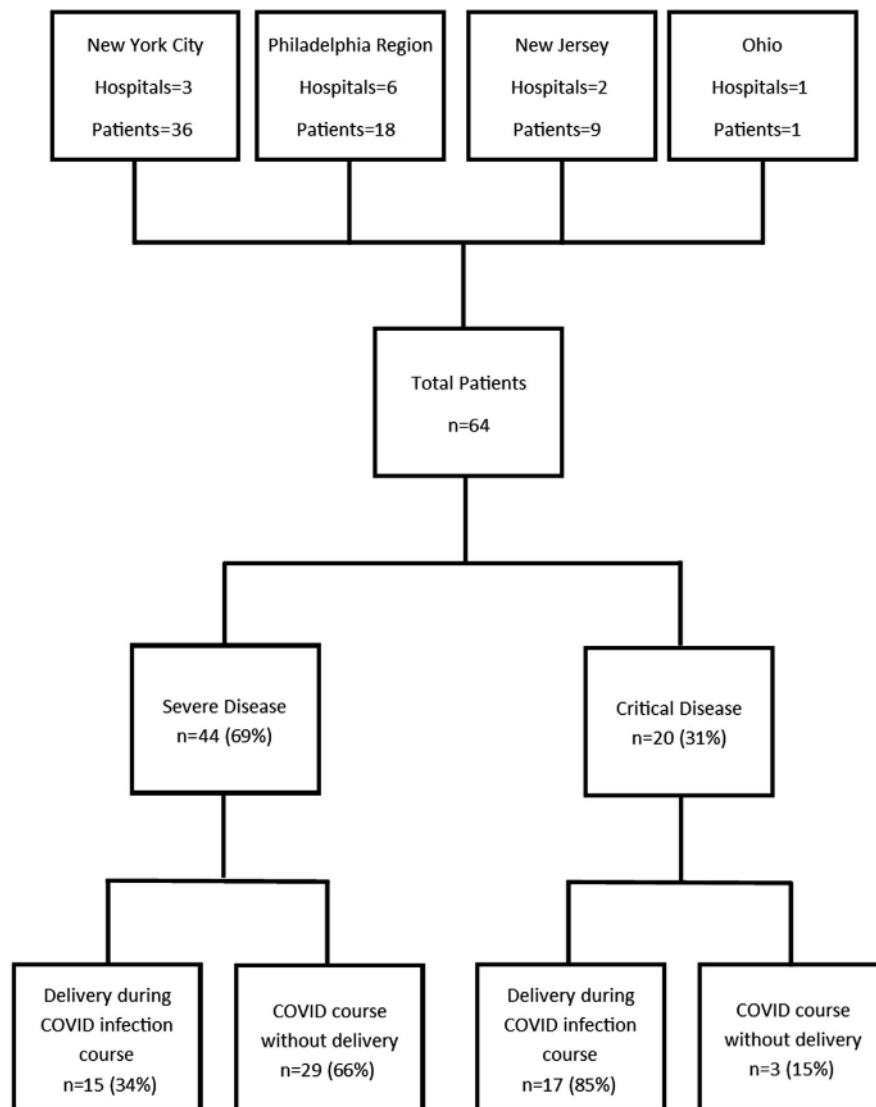
A multicenter cohort study was performed on pregnant women admitted to the hospital for treatment of severe or critical COVID-19 from March 5, 2020 to April 20, 2020, to determine the clinical course of the disease. To maximize the number of cases, this study was of both retrospective and prospective nature. It was designed in accordance with the Strengthening the Reporting of Observational Studies in Epidemiology (STROBE) guidelines for cohort studies before data collection.<sup>8</sup> Institutional review board (IRB) approval was obtained from the primary site, Thomas Jefferson University (IRB control number 20E.397). Collaborating sites obtained IRB approval or data use agreements with Thomas Jefferson University, when required by their institution.

Inclusion criteria were all pregnant and current postpartum women with positive laboratory testing for SARS-CoV-2, criteria that meet the diagnosis of severe or critical COVID-19 as

defined by the Chinese Center for Disease Control and Prevention.<sup>9</sup> Severe COVID-19 was defined as dyspnea, respiratory rate  $\geq 30$  breaths per minute, blood oxygen saturation  $\leq 93\%$  on room air, ratio of partial pressure of arterial oxygen to fraction of inspired oxygen  $< 300$  mm Hg, or lung infiltrates  $> 50\%$  within 24–48 hours of symptom onset.<sup>9</sup> For the purpose of the definition of severe disease in this study, “dyspnea” was defined as patient-reported dyspnea at rest. Critical COVID-19 was defined as respiratory failure requiring mechanical ventilation, septic shock, or multiple organ dysfunction or failure.<sup>9</sup> Respiratory failure was defined as a need for invasive mechanical ventilation. Septic shock was defined as  $\geq 2$  Sequential (sepsis-related) Organ Failure Assessment (SOFA) criteria (decline in ratio of partial pressure of oxygen to fraction of inspired oxygen, decline in platelets, rising bilirubin, decline in mean arterial pressure [MAP], decline in Glasgow Coma Scale, and rise in serum creatinine) and need for vasopressors to maintain a MAP of  $\geq 65$  mm Hg and serum lactate of  $> 2$  mmol/L even with sufficient volume resuscitation.<sup>10</sup> Women were considered to have multiple organ dysfunction or failure if they had evidence of at least 2 of the following: renal impairment or failure (defined as a 3-fold increase in baseline creatinine or need for dialysis<sup>11</sup>), liver failure (international normalized ratio [INR]  $> 1.5$ ), refractory hypoglycemia as diagnosed by the treating institution, or hepatic encephalopathy.<sup>12</sup> Women with inconclusive or negative testing for SARS-CoV-2 (even if clinical suspicion was high) and women who received a diagnosis of COVID-19  $> 7$  days after delivery were excluded.

The primary outcome was median duration (from hospital admission to discharge) overall and for women with severe vs critical COVID-19. This outcome was chosen as a surrogate for the duration of illness requiring support. Secondary maternal outcomes focused on the clinical course of COVID-19, with the day of symptom onset being defined as disease day 1. The variables of the clinical course examined included

**FIGURE 1**  
Flow diagram of included women



Flowchart of women with severe or critical COVID-19 during pregnancy.

COVID-19, coronavirus disease 2019.

Pierce-Williams et al. Clinical course of severe and critical coronavirus disease 2019 in hospitalized pregnancies: a United States cohort study. *AJOG MFM* 2020.

disease day of oxygen supplementation, other respiratory support, intubation and extubation, day of peak respiratory support, and day of return to room air. Data were also recorded on new-onset cardiomyopathy, cardiac arrest, and death. Disease day of delivery, if applicable, was included. Peak levels of various serum laboratory markers as well as the peak day of laboratory value if it was drawn  $\geq 3$  times were recorded. Additional data were collected on the

duration of hospitalization, treatment modalities, obstetrical outcomes, and neonatal outcomes.

### Data collection

Investigators at each institution reviewed the electronic medical record of women and any delivered neonate, and deidentified data were recorded and stored in a standardized computer spreadsheet. Data were reviewed by coinvestigators and compiled for analysis.

### Statistical analysis

Statistical analysis included means and standard deviations for normally distributed data, medians with interquartile ranges (IQRs), and percentages. The groups were compared using the *t*-test, analysis of variance, Mann-Whitney *U* test,  $\chi^2$  test, and Fisher exact test. Analysis was performed for severe and critical disease separately, as well as for the entire cohort.

### Results

Twelve institutions provided data: Pennsylvania (n=6), New York (n=3), New Jersey (n=2), and Ohio (n=1). Of 64 women included, 44 (69%) had severe disease, and 20 (31%) met the criteria for critical COVID-19 (Figure 1).

Maternal demographics are shown in Table 1. Overall, the mean age was 33 years; women with critical disease were significantly older than women with severe disease. Average body mass index was 34 kg/m<sup>2</sup>. Among 64 women, 21 (31%) were Hispanic, 18 (28%) were non-Hispanic black, and 16 (25%) were non-Hispanic white. Preexisting pulmonary conditions (ie, obstructive sleep apnea, asthma, chronic obstructive pulmonary disease) were present in 25% of women, and preexisting cardiac disease (ie, chronic hypertension, cardiomyopathy) were present in 17% of women.

The average gestational age at symptom onset of COVID-19 was 29.9 $\pm$ 5.8 weeks (range 16.6–39.1 weeks), with hospital admission at 30.7 $\pm$ 5.7 weeks. No patients included in this study were postpartum at the onset of symptoms or hospitalization. Only 23% of women with severe disease experienced symptom onset at <24 weeks, whereas all women with critical disease experienced symptom onset at >24 weeks (*P*=.024). Sixty-nine percent of women developed symptoms at <34 weeks, and 86% of women developed symptoms at <37 weeks. Most women (98%) had nasopharyngeal testing to confirm the presence of the disease. Two women with critical disease initially tested negative: 1 subsequently tested positive by bronchoalveolar lavage (after 3 negative nasopharyngeal swabs over 6 days), and

**TABLE 1**  
**Maternal demographics**

Characteristic	All (N=64)	Severe group (n=44)	Critical group (n=20)	Pvalue
Maternal age (y)	33.2±5.8	32.0±6.0	35.9±4.3	.011
BMI kg/m <sup>2</sup>	33.5±7.1	35.3±7.3	29.7±5.1	.003
Race and ethnicity				.21
Non-Hispanic black	18 (28)	13 (30)	5 (25)	
Non-Hispanic white	16 (25)	9 (20)	7 (35)	
Hispanic	20 (31)	17 (39)	3 (15)	
Asian/Pacific Islander	3 (5)	1 (2)	2 (10)	
Other	7 (11)	4 (9)	3 (15)	
Singleton pregnancy	63 (98)	44 (100)	19 (95)	.135
Multiparous	46 (72)	30 (68)	16 (80)	.33
Insurance type				.014
State	26 (41)	21 (48)	5 (25)	
Private	35 (55)	23 (52)	12 (60)	
Uninsured	3 (5)	0 (0)	3 (15)	
Pulmonary pathology (OSA, asthma, COPD, etc)	16 (25)	12 (27)	4 (20)	.76
Cardiac disease (including chronic hypertension, cardiomyopathy)	11 (17)	8 (18)	3 (15)	1.00

Data are presented as mean±standard deviation or n (%).

BMI, body mass index; COPD, chronic obstructive pulmonary disease; OSA, obstructive sleep apnea.

Pierce-Williams et al. Clinical course of severe and critical coronavirus disease 2019 in hospitalized pregnancies. AJOG MFM 2020.

the other tested positive by repeat nasopharyngeal testing (Table 2). The vast majority of women in this study were treated with hydroxychloroquine (81%) (Table 3). Remdesivir was used in 16 of 64 (25%) women with COVID-19 (7% with severe disease and 65% with critical disease). Convalescent serum was used in 1 patient with critical disease. Of 64 women, 15 (23%) (4% with severe disease and 55% with critical disease) received steroids for maternal indications (rather than for fetal maturity). Of 20 women with critical disease, 12 (60%) received prophylactic anticoagulants, and 8 (40%) received therapeutic anticoagulants during admission. Furthermore, of 44 women with severe disease, 25 (57%) received prophylactic anticoagulants, and 2 (5%) received therapeutic anticoagulants (Table 3).

In this cohort, 32 of 44 (73%) women with severe disease required O<sub>2</sub> supplementation, whereas 19 of 20 (95%) women with critical disease required

intubation (Table 3). In women with critical disease, 14 of 20 (70%) developed ARDS, 4 of 20 (20%) were placed in prone positioning (gestational ages 26–31 weeks), and 4 of 20 (20%) required reintubation. At the time of writing, there were no cases of cardiomyopathy or maternal mortality. One woman experienced cardiac arrest after a prolonged clinical course of the disease. She was hospitalized 14 days after symptom onset and intubated 6 days later at 20 days from symptom onset. She remained intubated for approximately 1 week, with initial signs of recovery and extubation; however, she again developed respiratory failure and experienced cardiac arrest on day 31. Cardiopulmonary resuscitation and reintubation were performed, and return of spontaneous circulation (ROSC) was achieved. She gave birth through cesarean delivery after ROSC. She was intubated for more than 2 weeks after delivery before she underwent tracheostomy placement.

In this cohort and at the time of writing, we observed that the median day (with IQR) of events from the first day of reported symptoms were as follows (Table 4; Figure 2): hospital admission on day 7 (IQR, 5–9), initiation of supplemental O<sub>2</sub> on day 8 (IQR, 5–10), intubation (among women with critical disease) on day 9 (IQR, 6–11.5), peak respiratory support on day 8.5 (IQR, 6–11), hydroxychloroquine treatment on day 8 (IQR, 6–11), remdesivir treatment on day 10.5 (IQR, 8.8–12.5), discontinuation of supplemental O<sub>2</sub> on day 13 (IQR, 9–17) (2 patients with severe disease and 11 patients with critical disease remained on supplemental O<sub>2</sub> at the time of writing), and symptom resolution on day 15 (IQR, 11.5–20) (for patients who have achieved resolution). Of women who gave birth during the clinical course of the disease, delivery occurred on median disease day 10 (IQR, 1–6). When comparing women with severe disease vs women with critical

**TABLE 2**  
**Initial findings of COVID-19**

Characteristic	All (N=64)	Severe group (n=44)	Critical group (n=20)	Pvalue
Gestational age at symptom onset (wk)	29.9±5.8	29.9±6.3	29.7±4.6	.899
Symptom onset at <24 wk	10 (15.6)	10 (22.7)	0 (0)	.024
Symptom onset at <34 wk	44 (68.8)	29 (65.9)	15 (75)	.47
Symptom onset at <37 wk	55 (85.9)	36 (81.8)	19 (95)	.16
Gestational age at hospitalization (wk)	30.7±5.7	30.8±6.2	30.6±4.5	.898
Initial negative testing	2 (3)	0 (0)	2 (10)	.094
Source of sample				
Nasopharyngeal	63 (98)	44 (100)	19 (95)	.14
BAL	1 (2)	0 (0)	1 (5)	

Data are presented as mean±standard deviation or n (%).

BAL, bronchoalveolar lavage; COVID-19, coronavirus disease 2019.

Pierce-Williams et al. Clinical course of severe and critical coronavirus disease 2019 in hospitalized pregnancies. *AJOG MFM* 2020.

disease, the clinical course was longer for the critical group, requiring the use of invasive mechanical ventilation, later cessation of supplemental oxygen (median day 12 [IQR, 8–16] vs day 17 [IQR, 14–22];  $P=.014$ ), last fever (median day 9 [IQR, 6–10] vs day 17.5 [IQR, 14–20.5];  $P<.00001$ ), symptoms (median day 13.5 [IQR, 10–18.5] vs day 20 [IQR, 15.5–22];  $P=.029$ ), and later hospital discharge (median day 12 [IQR, 9.3–15.8] vs day 17 [IQR, 16–25];  $P=.0056$ ). The Supplemental Table shows the disease day of events in the clinical course of COVID-19 by gestational age cutoffs.

If laboratory studies typically utilized to predict disease severity were used as a proxy for the most severe point in the clinical course of the disease in this study, the average peak disease day was 11 (Table 5). Patients with critical disease had higher interleukin-6 (IL-6) levels, ferritin, fibrin split products, platelets, procalcitonin, troponins, C-reactive protein, creatine phosphokinase, and lactate dehydrogenase compared with patients with severe disease.

Table 6 shows the median duration of COVID-19 hospital characteristics for 51 discharged women. Symptoms lasted 15 days for those whose symptoms had resolved (13 days for women with severe disease vs 19 days for women with critical disease;  $P=.099$ ). For the primary

outcome, the length of hospital stay was on average 8±5 days (median duration 6 days). Women with severe disease were hospitalized for 6 days (IQR, 4.3–7), and women with critical disease were hospitalized for 12 (IQR, 7–16) days ( $P=.0031$ ). At the time of writing, several women remained hospitalized (2 with severe disease and 11 with critical disease). Women required supplemental O<sub>2</sub> for a duration of 6 days (5 [IQR, 3–7] days for those with severe disease and 10 [IQR, 7–16] for those with critical disease;  $P=.0038$ ). Of the women who were intubated and had been discharged, the median duration of intubation was 3 days (IQR, 2–8).

Among women who delivered during hospitalization, preterm delivery at <34 weeks' gestation and <37 weeks' gestation occurred in 10 (31.2%) and 19 (59.4%) women, respectively; however, when evaluating only women with critical disease who gave birth (n=17), 15 of 17 (88%) delivered preterm (Table 7). Spontaneous preterm labor occurred in only 2 (6%) women who delivered, both in the critical group. During the clinical course of COVID-19, 50% of women delivered (34% of women with severe disease and 85% of women with critical disease) (Table 7). Maternal status was the primary indication in most cases (69% overall, 60% severe, 76% critical). The remainder was for fetal indications.

Women with critical COVID-19 delivered at an earlier mean gestational age than those with severe disease (32±4 weeks' gestation vs 37±2 weeks' gestation;  $P<.0001$ ). There were no cases of intrauterine fetal demise. Delivery route was cesarean for 53% and 94% of women with severe and critical disease, respectively. Preeclampsia or gestational hypertension occurred in only 2 (3%) women; however, 50% of our cohort did not give birth at the time of writing. The rate of postpartum hemorrhage, defined as blood loss of >1000 mL at time of vaginal or cesarean delivery or symptomatic hypovolemia within 24 hours associated with blood loss, was 9% overall (13% in the severe disease group and 6% in the critical disease group). The rate of presumed intrauterine infections (chorioamnionitis or endometritis) was 9% (20% in the severe disease group and 0% in the critical disease group).

The average neonatal birthweight was 2403.3±858.0 g (2945.8±509.2 g in the severe disease group and 1924.6±846.6 g in the critical disease group); however, the difference is likely attributed to earlier gestational age of delivery in the critical disease group. Sixty-four percent of neonates required ICU admission (40% in the severe disease group and 83% in the critical disease group). Additional neonatal outcomes are

**TABLE 3**  
**Management of patients with COVID-19**

Characteristic	All (N=64)	Severe group (n=44)	Critical group (n=20)	Pvalue
Hydroxychloroquine	52 (81)	33 (75)	19 (95)	.06
Antibiotic treatment for CAP	36 (56)	22 (50)	14 (70)	.14
Remdesivir	16 (25)	3 (7)	13 (65)	<.001
Convalescent serum	1 (2)	0 (0)	1 (5)	.31
Steroids for maternal treatment	15 (23)	4 (9)	11 (55)	<.001
Anticoagulants during admission				
Prophylactic heparin/LMWH	37 (58)	25 (57)	12 (60)	.81
Therapeutic heparin/LMWH	10 (16)	2 (5)	8 (40)	<.001
Supplemental O <sub>2</sub>	52 (81)	32 (73)	20 (100)	.01
High-flow nasal cannula	16 (25)	5 (11)	11 (55)	<.0001
BiPAP/CPAP	5 (8)	1 (2)	4 (20)	.03
Intubated	19 (30)	0 (0)	19 (95)	<.001
Reintubated	4 (6)	0 (0)	4 (20)	.008
Prone positioning	4 (6)	0 (0)	4 (20)	.008
ECMO	0 (0)	0 (0)	0 (0)	1.00
ARDS	14 (22)	0 (0)	14 (70)	<.001
New-onset maternal cardiomyopathy	0 (0)	0 (0)	0 (0)	1.00
Maternal cardiac arrest	1 (2)	0 (0)	1 (5)	<.001
Maternal mortality	0 (0)	0 (0)	0 (0)	1.00

Data are presented as n (%).

ARDS, acute respiratory distress syndrome; BiPAP, bilevel positive airway pressure; CAP, community-acquired pneumonia; COVID-19, coronavirus disease 2019; CPAP, continuous positive airway pressure; ECMO, extracorporeal membrane oxygenation; LMWH, low-molecular-weight heparin.

Pierce-Williams et al. Clinical course of severe and critical coronavirus disease 2019 in hospitalized pregnancies. AJOG MFM 2020.

reported in Table 8. Detailed data on neonatal testing and method of testing were not available. One of 33 neonates received a diagnosis of COVID-19; in this newborn, the first test for SARS-CoV-2 at 24 hours of life was negative, but a repeat test at 48 hours returned with a positive result. The neonate showed no signs or symptoms of COVID-19.

## Discussion

### Principal findings

In this cohort, hospitalized pregnant women with severe or critical COVID-19 were typically admitted on disease day 7 (as measured from the first day of onset of symptoms), and the median duration of hospitalization was 6 days (6 days vs 10.5 days for women with severe and critical disease, respectively). Intubation was usually performed around disease

day 9 on those who required it (approximately 2 days after hospital admission), and peak severity of non-intubated (severe) disease, determined by highest oxygen use, occurred on disease day 9. Fifty percent of women with COVID-19 delivered during the clinical course of the disease, with most deliveries due to maternal disease. About half of the women with severe disease delivered vaginally, whereas more than 90% of women with critical disease gave birth through cesarean delivery. The average gestational age at delivery was 37 weeks' gestation for women with severe disease and 32 weeks' gestation for women with critical disease. Most preterm deliveries were due to maternal status; however, data on exact etiologies were not collected. There were no maternal deaths as of this manuscript's submission.

### Results in the context of what is known

The clinical course of the disease in hospitalized pregnant women with severe or critical COVID-19 seems to be similar to nonpregnant patients in the limited available studies. Of note, these comparisons are limited because the comparison criteria include a broad age range, an international community, nonpregnant patients, men, and varied indications for admission. In a series of 41 nonpregnant patients in China, hospital admission occurred on disease day 7 with onset of dyspnea on day 8. ARDS occurred on day 9, and ICU admission and mechanical ventilation on day 10.5.<sup>4</sup> In another study of nonpregnant patients from China, the length of hospital stay was 12 days.<sup>6</sup> In a cohort of 191 hospitalized nonpregnant patients, ARDS and ICU admission occurred on

**TABLE 4**  
**Average disease day of events in clinical course of COVID-19 (day 1, first day of onset of symptoms)**

Characteristic	All (N=64)	Severe group (n=44)	Critical group (n=20)	Pvalue
Inpatient admission	7 (5–9)	7 (5–9)	7 (5–10)	.98
Hydroxychloroquine	8 (6–11)	8 (6–11)	8 (5.5–10.5)	.77
Remdesivir	10.5 (8.8–12.5)	10 (9.5–10.5)	11 (8–14)	.80
Antibiotics for CAP	8 (5–10)	8 (6–10)	8 (5–9)	.43
Supplemental O <sub>2</sub> started	8 (5–10)	8 (6–9)	7 (5–10)	.54
Peak respiratory support	8.5 (6–11)	8 (7–11)	9 (6–11.5)	.89
High-flow nasal cannula	9 (7–11)	9 (7.8–10)	9 (6–11)	.80
BiPAP/CPAP	12 (10–19)	10 (–) <sup>a</sup>	15.5 (10–20)	—
Intubation	9 (6–11.5)	— <sup>b</sup>	9 (6–11.5)	—
Reintubation	23 (20.3–25.8)	—	23 (20.3–25.8)	—
Final extubation <sup>c</sup>	15.5 (12–18.8)	—	15.5 (12–18.8)	—
Supplemental O <sub>2</sub> discontinued (n=50) <sup>d</sup>	13 (9–17)	12 (8–16)	17 (14–22)	.014
Last fever	9 (7–15)	9 (6–10)	17.5 (14–20.5)	<.00001
Hospital discharge (n=51) <sup>e</sup>	12 (10–16.5)	12 (9.3–15.8)	17 (16–25)	.0056
Symptom resolution <sup>f</sup>	15 (11.5–20)	13.5 (10–18.5)	20 (15.5–22)	.029
Delivery (n=32)	10 (6–13)	8 (6–12)	12 (6–13)	.35
Maternal cardiac arrest (n=1) <sup>g</sup>	31	—	31	—

Data are presented as median (interquartile range).

BiPAP, bilevel positive airway pressure; CAP, community-acquired pneumonia; COVID-19, coronavirus disease 2019; CPAP, continuous positive airway pressure.

<sup>a</sup> No interquartile range for BiPAP/CPAP in severe group, as n=1; <sup>b</sup> No patients were intubated in severe group; <sup>c</sup> Five women remained intubated at the time of writing; <sup>d</sup> Two patients with severe disease remained on O<sub>2</sub> and admitted at time of writing; <sup>e</sup> Eleven patients with critical disease remained on O<sub>2</sub> and admitted at time of writing; <sup>f</sup> Twenty-nine patients have achieved resolution of symptoms; <sup>g</sup> Only 1 woman had maternal cardiac arrest.

Pierce-Williams et al. Clinical course of severe and critical coronavirus disease 2019 in hospitalized pregnancies. *AJOG MFM* 2020.

day 12, death occurred on day 18.5, and discharge occurred on day 22.<sup>5</sup> In a cohort of 15 pregnant women in China, the interval from symptom onset to admission was 2–10 days. It must be noted that this cohort does not include any patients who required invasive mechanical ventilation.<sup>7</sup> It is important to note that these nonpregnant populations were mostly older men, and an appropriate nonpregnant reproductive age control group is not yet available in the literature.

A current challenge lies in the prediction of patients presenting with COVID-19 who will progress to develop critical disease. Consistently across studies in nonpregnant populations, the risk of adverse outcomes increases with age and comorbidities, as well as certain laboratory values and radiologic findings.<sup>5,13–16</sup> In 1 study, patients

requiring ICU care were more likely to have comorbid hypertension, cardiovascular disease, diabetes, and cerebrovascular disease.<sup>16</sup> In terms of prognostic laboratory parameters, more severe lymphopenia has been noted in patients with worse outcomes.<sup>4,5,13,16–18</sup> Other laboratory markers linked with severe illness include elevated D-dimer, IL-6, and serum ferritin levels.<sup>5,16,18</sup>

Because there are currently few reports of severe or critical COVID-19 in pregnant women, this study aimed to describe these patients and their clinical progression. In previous outbreaks of respiratory pathogens, pregnant populations experienced increased severity of illness and mortality. However, current data in the COVID-19 pandemic suggest that pregnant women experience similar, or even lower, rates of severe disease than nonpregnant patients.<sup>3,19</sup>

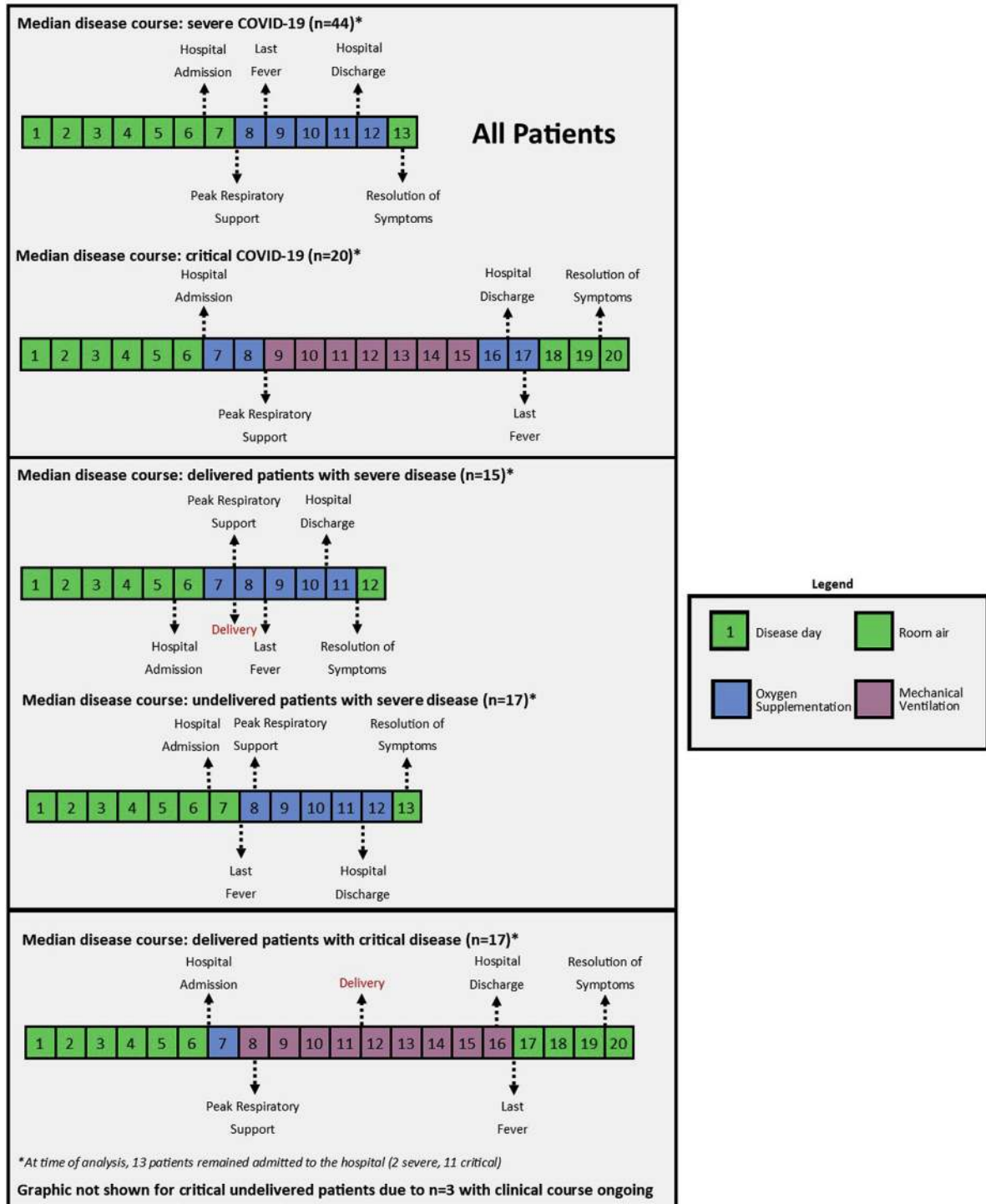
Despite these early findings, there is concern that pregnant women may still be at a higher risk for complications. For example, case reports have indicated cardiomyopathy in the setting of COVID-19.<sup>20</sup> Further data are needed on when this occurs and what predicts its occurrence. It is therefore critical to determine the unique factors in pregnant women that predict a more severe disease course to guide clinical management as well as the optimal time of delivery.

### Clinical implication and research implications

These data can help guide obstetricians in deciding when a patient should be symptomatically improving or at risk for deterioration. This is particularly important for the obstetrician who needs to consider timing and mode of delivery



**FIGURE 2**  
**Median clinical course**



Median clinical course of the disease, separated by patient groups (severe and critical) and delivery (delivered and not delivered). Of note, dates of oxygen discontinuation, hospital discharge, and symptom resolution may appear falsely low because of publication before completion of disease course in some patients.

COVID-19, coronavirus disease 2019.

Pierce-Williams et al. Clinical course of severe and critical coronavirus disease 2019 in hospitalized pregnancies: a United States cohort study. *AJOG MFM* 2020.

**TABLE 5**  
**Peak laboratory prognostic markers**

Laboratory values <sup>a</sup>	All (N=64)	Severe group (n=44)	Critical group (n=20)	Pvalue
IL-6 ( $\leq 1.8$ pg/mL) <sup>b</sup>	70.4 $\pm$ 68.1	40.0 $\pm$ 27.6	93.2 $\pm$ 81.8	.008
Ferritin (5–130 ng/mL)	311.0 $\pm$ 647.5	195.7 $\pm$ 192.8	469.5 $\pm$ 967.3	.0003
Disease day of peak	13.0 $\pm$ 6.1	11.1 $\pm$ 4.3	15.2 $\pm$ 7.4	.007
Fibrin split products ( $\mu$ g/mL)	690.8 $\pm$ 405.7	843.0 $\pm$ 181.7	462.5 $\pm$ 647.0	.0006
Disease day of peak	11.1 $\pm$ 4.3	8.7 $\pm$ 1.2	18	—
Liver enzymes (5–35 U/L)				
AST	74.0 $\pm$ 70.2	71.4 $\pm$ 82.2	79.3 $\pm$ 35.6	.68
ALT	60.2 $\pm$ 59.8	53.0 $\pm$ 58.4	74.8 $\pm$ 61.5	.18
Disease day of peak	11.4 $\pm$ 6.1	10.0 $\pm$ 5.0	13.9 $\pm$ 7.3	.015
Platelets (150–420 $10^9$ /L)	350.1 $\pm$ 153.1	307.8 $\pm$ 123.2	441.2 $\pm$ 173.7	.001
Disease day of peak	13.0 $\pm$ 6.5	11.1 $\pm$ 5.7	16.8 $\pm$ 6.5	.0007
D-dimer (100–1500 ng/mL)	1325.6 $\pm$ 3388.5	745.5 $\pm$ 979.5	2014.4 $\pm$ 4893.1	.101
Disease day of peak	13.3 $\pm$ 6.8	12.3 $\pm$ 7.6	14.5 $\pm$ 6.0	.26
PT (10–13 s)	12.9 $\pm$ 1.4	12.3 $\pm$ 0.9	13.8 $\pm$ 1.6	<.0001
PTT (24–38 s) <sup>c</sup>	37.1 $\pm$ 20.0	31.6 $\pm$ 3.4	44.8 $\pm$ 29.5	.004
Disease day of peak	11.2 $\pm$ 6.1	9.0 $\pm$ 5.0	13.7 $\pm$ 6.4	.002
Procalcitonin (0.01–0.1 ng/mL)	0.6 $\pm$ 1.2	0.3 $\pm$ 0.4	1.1 $\pm$ 1.7	.004
Disease day of peak	9.3 $\pm$ 5.8	8.4 $\pm$ 5.3	10.5 $\pm$ 6.5	.18
Troponin (<0.04 mg/dL)	0.7 $\pm$ 3.0	0.01 $\pm$ 0.01	1.5 $\pm$ 4.5	.03
Disease day of peak	12.0 $\pm$ 7.5	10.4 $\pm$ 4.6	13.1 $\pm$ 9.1	.12
CRP (<20 mg/dL)	83.7 $\pm$ 82.0	43.3 $\pm$ 45.9	141.9 $\pm$ 88.6	.0001
Disease day of peak	10.9 $\pm$ 4.7	9.9 $\pm$ 4.4	12.2 $\pm$ 5.0	.068
CPK (13–101 U/L)	280.4 $\pm$ 286.5	92.8 $\pm$ 83.7	485.1 $\pm$ 290.9	.0001
Disease day of peak	13.2 $\pm$ 7.0	14.4 $\pm$ 5.5	12.4 $\pm$ 8.1	.25
LDH (80–450 U/L)	364.9 $\pm$ 164.3	317.0 $\pm$ 157.6	467.6 $\pm$ 131.2	.0004
Disease day of peak	11.1 $\pm$ 6.0	9.4 $\pm$ 5.1	14.6 $\pm$ 6.4	.0009

Data are presented as (reference range value in pregnancy, unit) and mean day $\pm$ standard deviation.

ALT, alanine aminotransferase; AST, aspartate aminotransferase; CPK, creatine phosphokinase; CRP, C-reactive protein; IL-6, interleukin-6; LDH, lactate dehydrogenase; PT, prothrombin time; PTT, partial thromboplastin time.

<sup>a</sup> Many of the reference ranges for these laboratory tests change by trimester; <sup>b</sup> Reference range is for nonpregnant patients; <sup>c</sup> Seventy-four percent of women received prophylactic or therapeutic anticoagulation, which will alter coagulation study results.

Pierce-Williams et al. Clinical course of severe and critical coronavirus disease 2019 in hospitalized pregnancies. *AJOG MFM* 2020.

for patients with severe or critical COVID-19.<sup>21</sup> Typically, attempts should be made to support the mother with oxygen as needed to maintain an oxygen saturation of >95% and reassuring fetal monitoring. Markers of developing critical disease seem to be valid in pregnancy as well (Table 5), but further research is needed given that the physiology of pregnancy changes the normal ranges of several of these markers, with

the ultimate aim of developing a tool to predict those who would benefit from delivery. One useful variable is time: in our data, pregnant women with COVID-19 who developed critical disease and needed intubation progressed quickly from admission on day 7 from symptom onset to intubation on day 9. As the standard deviation for time to intubation is 4.5 days, this means that 95% of women requiring intubation will do so

within 20 days of symptom onset; this is still a long period when management is most difficult. As most women with severe disease do not develop critical illness, expectant supportive management is probably reasonable for most. On the other end of the spectrum, for women at >34 weeks' gestation with several risk factors for critical disease such as advanced age; comorbidities including obesity, pulmonary or cardiac

**TABLE 6**  
**Duration of COVID-19 hospital characteristics for discharged women**

Characteristic	All	Severe group	Critical group	Pvalue
Symptoms (n=29) <sup>a</sup>	15 (11–19)	13 (10–19)	19 (14–22)	.099
Hospital stay	6 (5–8)	6 (4.3–7)	12 (7–18)	.0031
Supplemental O <sub>2</sub>	6 (3–8)	5 (3–7)	10 (7–16)	.0038
Intubation	3 (2–8)	N/A	3 (2–8)	—

Data are presented as median (interquartile range) of days.

COVID-19, coronavirus disease 2019; N/A, not applicable.

<sup>a</sup> Only for women who became asymptomatic.

Pierce-Williams et al. Clinical course of severe and critical coronavirus disease 2019 in hospitalized pregnancies. *AJOG MFM* 2020.

disease, diabetes, and others; predictive laboratory abnormalities; and predictive respiratory requirements, delivery may

be indicated before onset of critical disease. These are challenging cases to manage, often requiring individualized

decisions, given that we do not know whether cesarean delivery increases the severity of the clinical course and given

**TABLE 7**  
**Pregnancy outcomes**

Characteristic	All (N=64)	Severe group (n=44)	Critical group (n=20)	Pvalue
Steroids for fetal maturity	16 (25)	7 (16)	9 (45)	.013
Magnesium sulfate for neuroprotection	6 (9)	0 (0)	6 (30)	.001
Hypertensive disorders of pregnancy	2 (3)	2 (5)	0 (0)	1.00
Magnesium sulfate for preeclampsia	1 (2)	1 (2)	0 (0)	1.00
IUGR	2 (3)	0 (0)	2 (10)	.094
Stillbirth	0 (0)	0 (0)	0 (0)	1.00
Oligohydramnios	1 (2)	1 (2)	0 (0)	1.00
Delivered with COVID-19 during hospitalization (any cause)	32 (50)	15 (34)	17 (85)	<.001
Delivered for maternal status	22 (69)	9 (60)	13 (76)	.32
Delivered for fetal status	3 (9)	0 (0)	3 (18)	.23
Delivered for obstetrical indications	7 (22)	6 (40)	1 (6)	.033
Presumed chorioamnionitis or endometritis	3 (9)	3 (20)	0 (0)	.092
Postpartum hemorrhage <sup>a</sup>	3 (9)	2 (13)	1 (6)	0.590
Preterm delivery at <37 wk	19 (59)	4 (27)	15 (88)	.001
Preterm delivery at <34 wk	10 (31)	0 (0)	10 (59)	<.0001
Spontaneous preterm labor	2 (6)	0 (0)	2 (12)	.49
PPROM	1 (3)	1 (7)	0 (0)	.47
Delivery route				
Vaginal (includes operative vaginal delivery)	8 (25)	7 (47)	1 (6)	.009
Cesarean delivery	24 (75)	8 (53)	16 (94)	

Data are presented as n (%).

COVID-19, coronavirus disease 2019; IUGR, intrauterine growth restriction; PPRM, preterm premature rupture of membranes.

<sup>a</sup> Postpartum hemorrhage is defined as an estimated blood loss of  $\geq 1000$  mL with noticeable symptoms of blood loss/vital sign changes.

Pierce-Williams et al. Clinical course of severe and critical coronavirus disease 2019 in hospitalized pregnancies. *AJOG MFM* 2020.

**TABLE 8**  
**Neonatal outcomes**

Characteristic	All (N=33) <sup>a</sup>	Severe group (n=15)	Critical group (n=18)	Pvalue
Gestational age at delivery (wk)	34.5±4.2	37.7±1.6	31.9±3.8	<.0001
Birthweight (g) <sup>a</sup>	2403.3±858.0	2945.8±509.2	1924.6±846.6	<.001
NICU admission	21 (63.6)	6 (40)	15 (83.3)	0.014
5-minute Apgar scores	7.9±1.7	8.8±0.8	7.2±2.0	0.0067
Neonatal death	0 (0)	0 (0)	0 (0)	1.00

Data are presented as mean±standard deviation or n (%).

NICU, neonatal intensive care unit.

<sup>a</sup> One twin pregnancy in the critical group.

Pierce-Williams et al. Clinical course of severe and critical coronavirus disease 2019 in hospitalized pregnancies. *AJOG MFM* 2020.

the significant fluid shifts. A predictive tool to determine the patients with COVID-19 who would benefit from delivery during hospitalization could be developed as we acquire more data.

### Strengths and limitations

To date, we are not aware of a larger cohort study examining specifically the disease course of hospitalized pregnant women with molecular test confirming severe or critical COVID-19. A current report of COVID-19 in pregnant women from Wuhan, China, examined 118 pregnant women with COVID-19. In this cohort, only 10 women had severe or critical disease, and no data described the clinical course of the disease.<sup>22</sup>

Our study is limited by the nature of the cohort study (nonrandomized, lack of control group for comparison). In addition, management of patients with COVID-19 varied across institutions. Because of the urgency of obtaining information on COVID-19 in pregnancy, to guide physicians in managing patients during this pandemic, we were unable to report on long-term pregnancy or neonatal outcomes in this study.

These data are also limited by the fact that 13 women (2 with severe disease and 11 with critical disease) remained hospitalized, with several still on invasive mechanical ventilation, at the time of data collection; therefore, data on complete hospital courses and complete COVID-19 courses and pregnancy outcomes are limited. In this study, 50% of women did not give birth, which can be seen as a

strength in that delivery can be delayed; however, complete outcomes on pregnancy are not yet available. In particular, effects of COVID-19 on pregnancy, including fetal growth restriction and amniotic fluid abnormalities, could not be elucidated because of the timing of data collection. Longer-term analysis will be required in the future.

Recommendations on pharmacotherapy cannot be made on the basis of these data. Larger case-control studies of the course of COVID-19 in pregnancy and randomized-controlled trials (RCTs) of interventions are necessary to best determine prognosis and management of these women. Hydroxychloroquine was used in 81% of women in our study; however, current recommendations are for its use only in the setting of clinical trials owing to unclear risks and benefits.<sup>23</sup> Based on limited data from an RCT on the treatment of Ebola virus with remdesivir, the medication appears safe in pregnancy.<sup>24</sup> One-fourth (25%) of our cohort received remdesivir. RCTs are ongoing on the efficacy of remdesivir for COVID-19 treatment. At some of our institutions, RCTs on the use of convalescent plasma are ongoing and include pregnant women. Use of anticoagulants remains controversial, with more research needed. By study design, no data are provided for mild COVID-19.

### Conclusions

Pregnant women with severe or critical COVID-19 were typically admitted to the

hospital on disease day 7 and stayed hospitalized for 6 days. Intubation was usually performed around day 9 on patients who required it, and peak severity of nonintubated disease occurred on day 9 as well. Laboratory and treatment management can reasonably follow nonpregnant guidelines; however, differing reference ranges for some laboratory values in pregnancy must be considered. This clinical course is not markedly different from that of hospitalized nonpregnant patients with COVID-19, except that days in hospital are less, with lower mortality; however, this comparison is made with nonpregnant patients who are much older on average. This suggests that pregnancy should not be considered an independent risk factor for severe or critical COVID-19. Maternal mortalities have been rarely reported so far in the literature<sup>25,26</sup>; however, the sample sizes of pregnancy studies remain small, and further research is necessary. Unique to pregnancy, complications such as preterm delivery and need for delivery are common for women with severe or critical COVID-19. This information is important in counseling women who received diagnosis at the early stage of disease on the potential for progression to a severe or critical stage. As management of these cases is complex, we recommend a multidisciplinary approach with maternal-fetal medicine, infectious disease, and critical care physicians. We encourage healthcare providers to use these data when deciding on pregnancy management decisions and in counseling

family about the progression of COVID-19. ■

## Acknowledgments

The authors thank the members of the IRB at their institutions, Doreen Kornrumpf, Donald Polizzi, and Brandy Firman, for their help in coordinating this multicenter study and patients for their participation in this study.

## References

1. Johns Hopkins University and Medicine Coronavirus Resource Center. COVID-19 dashboard by the Center for Systems Science and Engineering (CSSE) at Johns Hopkins University (JHU). Available at: <https://coronavirus.jhu.edu/map.html>. Accessed April 27, 2020.
2. Wu Z, McGoogan JM. Characteristics of and important lessons from the coronavirus disease 2019 (COVID-19) outbreak in China: summary of a report of 72314 cases from the Chinese Center for Disease Control and Prevention. *JAMA* 2020 [Epub ahead of print].
3. Breslin N, Baptiste C, Gyamfi-Bannerman C, et al. COVID-19 infection among asymptomatic and symptomatic pregnant women: two weeks of confirmed presentations to an affiliated pair of New York City hospitals. *Am J Obstet Gynecol MFM* 2020 [Epub ahead of print].
4. Huang C, Wang Y, Li X, et al. Clinical features of patients infected with 2019 novel coronavirus in Wuhan, China. *Lancet* 2020;395:497–506.
5. Zhou F, Yu T, Du R, et al. Clinical course and risk factors for mortality of adult inpatients with COVID-19 in Wuhan, China: a retrospective cohort study. *Lancet* 2020;395:1054–62.
6. Guan WJ, Ni ZY, Hu Y, et al. Clinical characteristics of coronavirus disease 2019 in China. *N Engl J Med* 2020;382:1708–20.
7. Liu D, Li L, Wu X, et al. Pregnancy and perinatal outcomes of women with coronavirus disease (COVID-19) pneumonia: a preliminary analysis. *AJR Am J Roentgenol* 2020 [Epub ahead of print].
8. von Elm E, Altman DG, Egger M, et al. The Strengthening of Reporting of Observational Studies in Epidemiology (STROBE) statement: guidelines for reporting observational studies. *J Clin Epidemiol* 2008;61:344–9.
9. The Novel Coronavirus Pneumonia Emergency Response Epidemiology Team. Vital surveillances: the epidemiological characteristics of an outbreak of 2019 novel coronavirus diseases (COVID-19)—China, 2020. *China CDC Wkly* 2020;2:113–22.
10. Society for Maternal-Fetal Medicine (SMFM). Electronic address: [pubs@smfm.org](mailto:pubs@smfm.org), Plante LA, Pacheco LD, Louis JM. SMFM Consult Series #47: sepsis during pregnancy and the puerperium. *Am J Obstet Gynecol* 2019;220:B2–10.
11. Hilton R. Defining acute renal failure. *CMAJ* 2011;183:1167–9.
12. Bernal W, Wendon J. Acute liver failure. *N Engl J Med* 2013;369:2525–34.
13. Chen J, Qi T, Liu L, et al. Clinical progression of patients with COVID-19 in Shanghai, China. *J Infect* 2020;80:e1–6.
14. Yang X, Yu Y, Xu J, et al. Clinical course and outcomes of critically ill patients with SARS-CoV-2 pneumonia in Wuhan, China: a single-centered, retrospective, observational study. *Lancet Respir Med* 2020;8:475–81.
15. Wu C, Chen X, Cai Y, et al. Risk factors associated with acute respiratory distress syndrome and death in patients with coronavirus disease 2019 pneumonia in Wuhan, China. *JAMA Intern Med* 2020 [Epub ahead of print].
16. Wang D, Hu B, Hu C, et al. Clinical characteristics of 138 hospitalized patients with 2019 novel coronavirus-infected pneumonia in Wuhan, China. *JAMA* 2020;323:1061–9.
17. Kim ES, Chin BS, Kang CK, et al. Clinical course and outcomes of patients with severe acute respiratory syndrome coronavirus 2 infection: a preliminary report of the first 28 patients from the Korean cohort study on COVID-19. *J Korean Med Sci* 2020;35:e142.
18. Henry BM, de Oliveira MHS, Benoit S, Plebani M, Lippi G. Hematologic, biochemical and immune biomarker abnormalities associated with severe illness and mortality in coronavirus disease 2019 (COVID-19): a meta-analysis. *Clin Chem Lab Med* 2020 [Epub ahead of print].
19. Cheng B, Jiang T, Zhang L, et al. Clinical characteristics of pregnant women with coronavirus disease 2019 in Wuhan, China. *SSRN Electron J* 2020. Available at: <http://dx.doi.org/10.2139/ssrn.3555240>. Accessed July 8, 2020.
20. Juusela A, Nazir M, Gimovsky M. Two cases of coronavirus 2019—related cardiomyopathy in pregnancy. *Am J Obstet Gynecol MFM* 2020 [Epub ahead of print].
21. Schnettler WT, Al Ahwel Y, Suhag A. Severe ARDS in COVID-19-infected pregnancy: obstetric and intensive care considerations. *Am J Obstet Gynecol MFM* 2020 [Epub ahead of print].
22. Chen L, Li Q, Zheng D, et al. Clinical characteristics of pregnant women with Covid-19 in Wuhan, China. *N Engl J Med* 2020 [Epub ahead of print].
23. Bhimraj A, Morgan RL, Shumaker AH, et al. Infectious Diseases Society of America guidelines on the treatment and management of patients with COVID-19. *Clin Infect Dis* 2020 [Epub ahead of print].
24. Mulangu S, Dodd LE, Davey RT Jr, et al. A randomized, controlled trial of Ebola virus disease therapeutics. *N Engl J Med* 2019;381:2293–303.
25. Zaigham M, Andersson O. Maternal and perinatal outcomes with COVID-19: a systematic review of 108 pregnancies. *Acta Obstet Gynecol Scand* 2020 [Epub ahead of print].
26. Karami P, Naghavi M, Feysi A, et al. Mortality of a pregnant patient diagnosed with COVID-19: a case report with clinical, radiological, and histopathological findings. *Travel Med Infect Dis* 2020 [Epub ahead of print].

## Author and article information

From the Division of Maternal-Fetal Medicine, Department of Obstetrics and Gynecology, Sidney Kimmel Medical College, Thomas Jefferson University, Philadelphia, PA (Drs Pierce-Williams, Felder, and Berghella); Department of Obstetrics and Gynecology, Sidney Kimmel Medical College, Thomas Jefferson University, Philadelphia, PA (Dr Burd); Division of Maternal-Fetal Medicine, Department of Obstetrics and Gynecology and Women's Health, Montefiore Medical Center and Albert Einstein College of Medicine, Bronx, NY (Drs Khoury and Bernstein); Department of Obstetrics and Gynecology and Women's Health, Albert Einstein College of Medicine, Bronx, NY (Dr Avila); Division of Maternal-Fetal Medicine, Department of Obstetrics and Gynecology, New York University Langone Medical Center, New York, NY (Drs Penfield and Roman); Division of Maternal-Fetal Medicine, Department of Obstetrics, Gynecology, and Reproductive Science, Icahn School of Medicine, Mount Sinai, New York, NY (Drs DeBolt, Stone, and Bianco); Division of Maternal-Fetal Medicine, Department of Obstetrics and Gynecology, Maternal and Child Health Research Center, Perelman School of Medicine, University of Pennsylvania, Philadelphia, PA (Drs Kern-Goldberger, Hirschberg, Srinivas, Sedev, and Dolin); Department of Obstetrics, Gynecology, and Reproductive Sciences, Rutgers Robert Wood Johnson Medical School, New Brunswick, NJ (Dr Jayakumar); Division of Maternal-Fetal Medicine, Department of Obstetrics, Gynecology, and Reproductive Sciences, Rutgers Robert Wood Johnson Medical School, New Brunswick, NJ (Dr Brandt); Division of Maternal-Fetal Medicine, Department of Obstetrics and Gynecology, St. Luke's University Health Network, Bethlehem, PA (Drs Anastasio and Birsner); Department of Obstetrics and Gynecology, Saint Barnabas Medical Center, Livingston, NJ (Dr O'Brien); Division of Maternal-Fetal Medicine, TriHealth Good Samaritan Hospital, Cincinnati, OH (Drs Schnettler and Suhag); Department of Obstetrics and Gynecology, Crozer Chester Medical Center, Chester, PA (Drs Ahluwalia and Navathe); Department of Obstetrics and Gynecology, Einstein Healthcare Network, Philadelphia, PA (Dr Khalifeh); Sidney Kimmel Medical College, Thomas Jefferson University, Philadelphia, PA (Ms Anderson).

Received April 27, 2020; accepted May 4, 2020.

This paper is part of a supplement that represents a collection of COVID-related articles selected for publication by the editors of *AJOG MFM* without additional financial support.

The authors report no conflict of interest.

No financial support was received for this study.

Corresponding author: Vincenzo Berghella, MD. [vincenzo.berghella@jefferson.edu](mailto:vincenzo.berghella@jefferson.edu)