



Comparison of remove-compute-restore and least squares modification of Stokes' formula techniques to quasi-geoid determination over the Auvergne test area

Yildiz, H.; Forsberg, René; Ågren, J.; Tscherning, C.; Sjöberg, L.

Published in:
Journal of Geodetic Science

Link to article, DOI:
[10.2478/v10156-011-0024-9](https://doi.org/10.2478/v10156-011-0024-9)

Publication date:
2012

Document Version
Publisher's PDF, also known as Version of record

[Link back to DTU Orbit](#)

Citation (APA):
Yildiz, H., Forsberg, R., Ågren, J., Tscherning, C., & Sjöberg, L. (2012). Comparison of remove-compute-restore and least squares modification of Stokes' formula techniques to quasi-geoid determination over the Auvergne test area. *Journal of Geodetic Science*, 2(1), 53-64. <https://doi.org/10.2478/v10156-011-0024-9>

General rights

Copyright and moral rights for the publications made accessible in the public portal are retained by the authors and/or other copyright owners and it is a condition of accessing publications that users recognise and abide by the legal requirements associated with these rights.

- Users may download and print one copy of any publication from the public portal for the purpose of private study or research.
- You may not further distribute the material or use it for any profit-making activity or commercial gain
- You may freely distribute the URL identifying the publication in the public portal

If you believe that this document breaches copyright please contact us providing details, and we will remove access to the work immediately and investigate your claim.

Comparison of remove-compute-restore and least squares modification of Stokes' formula techniques to quasi-geoid determination over the Auvergne test area

Research Article

H. Yildiz^{1*}, R. Forsberg², J. Ågren³, C. C. Tscherning⁴, L. E. Sjöberg⁵

1 General Command of Mapping, Topographical Faculty, Ankara, Turkey

2 National Space Institute, Technical University of Denmark, Juliane Maries Vej 30, 2100, Copenhagen, Denmark

3 Geodetic Research Division Lantmäteriet (Swedish Mapping, Cadastre and Registry Authority), 80182 Gävle, Sweden

4 Niels Bohr Institute (NBI), University of Copenhagen, 2100, Denmark

5 Division of Geodesy, Royal Institute of Technology, 100 44, Stockholm, Sweden

Abstract:

The remove-compute-restore (RCR) technique for regional geoid determination implies that both topography and low-degree global geopotential model signals are removed before computation and restored after Stokes' integration or Least Squares Collocation (LSC) solution. The Least Squares Modification of Stokes' Formula (LSMS) technique not requiring gravity reductions is implemented here with a Residual Terrain Modelling based interpolation of gravity data. The 2-D Spherical Fast Fourier Transform (FFT) and the LSC methods applying the RCR technique and the LSMS method are tested over the Auvergne test area. All methods showed a reasonable agreement with GPS-levelling data, in the order of a 3–3.5 cm in the central region having relatively smooth topography, which is consistent with the accuracies of GPS and levelling. When a 1-parameter fit is used, the FFT method using kernel modification performs best with 3.0 cm r.m.s difference with GPS-levelling while the LSMS method gives the best agreement with GPS-levelling with 2.4 cm r.m.s after a 4-parameter fit is used. However, the quasi-geoid models derived using two techniques differed from each other up to 33 cm in the high mountains near the Alps. Comparison of quasi-geoid models with EGM2008 showed that the LSMS method agreed best in term of r.m.s.

Keywords:

Quasi-geoid • Remove-Compute-Restore • Least Squares Modification of Stokes' Formula • Auvergne test area

© Versita sp. z o.o.

Received 25 October 2011; accepted 23 December 2011

1. Introduction

Nowadays, a major goal for physical geodesy is the determination of the geoid with an accuracy on the cm level, matching the accuracy of GPS height determination. Although the cm-geoid

has been demonstrated in numerous cases in lowland areas with dense gravity data coverage, so far no convincing case of attaining a cm-geoid in mountainous regions has been reported. This is likely a consequence of insufficient gravity data coverage, theoretical shortcomings and insufficient quality of the levelling data, used to compute "ground truth" geoid (or quasi-geoid) values.

The most commonly adopted and applied approach to regional gravimetric geoid determination today is probably the remove-compute-restore (RCR) technique (e.g., Schwarz et al., 1990). In the remove step, a long-wavelength part (predicted by a global

*E-mail: hasan.yildiz@hgk.msb.gov.tr, Phone: +90 312 5952216

The manuscript solely reflects the personal views of the author and does not necessarily represent the views, positions, strategies or opinions of Turkish Armed Forces

gravity field model) and a short-wavelength part (predicted by topography) are removed from the original gravity data. In the compute step, the obtained band-pass filtered gravity anomalies are transformed into quasi-geoid heights either using Stokes' integration methods, e.g. 2-D spherical Fast Fourier Transform (FFT), or using Least Squares Collocation (LSC). After having carried out the compute step, the long-wavelength and the short-wavelength parts are restored to the quasi-geoid. One advantage of the LSC method is that it does not require gridded gravity anomalies as the FFT method and provides error estimates for the resulting quasi-geoid models.

Alternatively, least squares modification of Stokes' formula (LSMS), developed at the Royal Institute of Technology, does not require gravity reductions and includes a least squares kernel modification with additive corrections for the topography, downward continuation, the atmosphere and the ellipsoidal shape of the Earth (Sjöberg 2003). A detailed theoretical discussion about RCR and LSMS techniques can be found in Sjöberg (2005).

This study aims to numerically compare the RCR and LSMS techniques in the Auvergne test area. A number of studies have already reported results using different quasi-geoid determination methods in the same test area (Barzaghi and Sanso, 2009; Ågren et al., 2009b; Forsberg, 2010). However, this study differs from the previous studies because identical input data have been used for all methods, and the quasi-geoid models are not only compared with the GPS-levelling data, but also among each other and with the EGM2008 (Pavlis et al., 2008). Geodetic Gravity Field Modelling Programs (GRAVSOF) (Forsberg and Tscherning, 2008) and Scientific Software for Precise Geoid Determination Based on the Least-Squares Modification of Stokes' Formula (LSMS-GEOLAB) (Kiamehr and Sjöberg, 2010) are used for the practical implementations of the RCR and LSMS techniques, respectively.

Section 2 briefly describes the test area, data and the quasi-geoid determination methods. Section 3 gives the details of the computation of regional quasi-geoid models and comparison with GPS-levelling data. Quasi-geoid difference analyses are given in Section 4. Finally, the results are discussed and some conclusions are presented in Section 5.

2. Data and methodology

2.1. Data

The Auvergne data set was distributed in 2008 by Institut Géographique National (IGN), France, on behalf of the International Geoid Service (IGeS), as a "ground truth" example for precise geoid determination methods (Duquenne, 2007).

The Auvergne data set consists of about 240.000 gravity data points from the Bureau Gravimétrique, covering a $6^\circ \times 8^\circ$ area including most of France; a digital elevation model (DEM) based on 3" Shuttle Radar Topography Mission (SRTM) height data (version 3) covering a somewhat larger $8^\circ \times 10^\circ$ area (see Fig 1(a)); and a set of 75 GPS-levelling points in the "Massif Centrale" area, all with 1st order

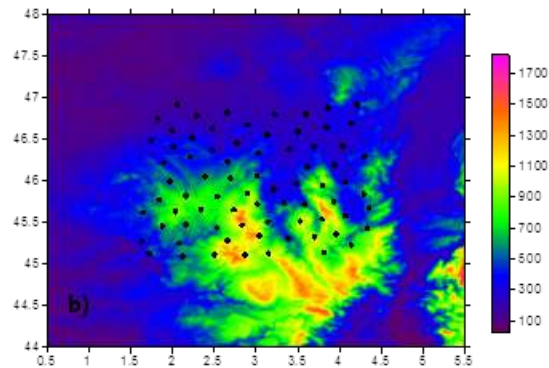
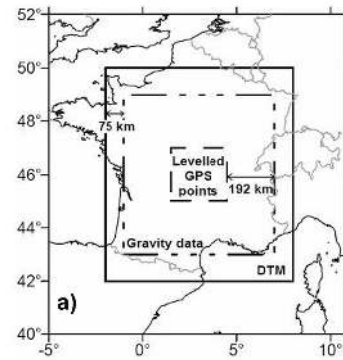


Figure 1. a) The data coverage for quasi-geoid determination (Duquenne, 2007); b) Distribution of GPS-levelling points (black circles) in the central region with the heights (in metre) of quasi-geoid computational points selected at $0.02^\circ \times 0.025^\circ$ resolution (approximately at 2 km spacing) from 3" Shuttle Radar Topography Mission (SRTM) height data over the quasi-geoid comparison area

levelling connections (see Fig 1(b)), and a quoted GPS ellipsoidal height accuracy of 2–3 cm (RBF points) or "slightly better" (NIVAG points) (Duquenne, 2007).

Duquenne (2007) suggested that these GPS-levelling points were linked to the French national levelling network (NGF-IGN69) by precise levelling with redundant observations, with the total standard deviation of the difference in heights between points in the GPS-levelling area better than 2 cm, including the uncertainties of the basic network and of the local ties. The NGF-IGN69 uses normal height system and is tied to Marseille tide gauge. Considering the suggested accuracy of GPS ellipsoidal heights as 2.5 cm and the accuracy of precise levelling measurements as 2 cm, an accuracy of 3.2 cm can be attained for the quasi-geoid heights of the GPS-levelling points through the error propagation law assuming uncorrelated observations.

The elevations of the GPS-levelling points range from 206 to 1235 m, and the highest mountain in the central area is 1886 m; it is therefore a relatively moderate mountainous area (Fig 1(a), 1(b)). The heights of quasi-geoid computational points selected at $0.02^\circ \times 0.025^\circ$ resolution (approximately at 2 km spacing) from 3"

Shuttle Radar Topography Mission (SRTM) height data over the quasi-geoid comparison area are shown in Fig 1(b). The elevations of the quasi-geoid computational points range from 21 m to 1823 m whereas the elevations of the free-air gravity anomalies range from 19 m to 1715 m over the quasi-geoid comparison area (Fig 1(b)).

2.2. Methodology

2.2.1. Remove Compute Restore Technique

In the RCR technique, the anomalous potential T is split into three parts:

$$T = T_{EGM} + T_{RTM} + T_{RES}, \quad (1)$$

where T_{EGM} is the contribution of an Earth Geopotential Model (EGM). T_{RTM} are the terrain effects from Residual Terrain Modelling (RTM), and T_{RES} the residual gravity field. T is treated as a spatial function. One reason for subtracting an EGM is to represent the gravity field outside the area covered with data.

For the terrain-reduction, the terrain effects are reduced relative to a mean elevation surface. The terrain potential is subtracted from the observations using a prism integration, i.e. representing the mass between the actual topography and the mean elevation surface as mass prisms of either positive or negative density, nominally 2670 kg/m^3 . The prism implementation of the RTM method has an inherent problem: the method leaves a point above the mean elevation surface in the mass-free domain, whereas a point below the mean elevation surface after the reduction would correspond to the value inside the reference topography mass. As all geodetic gravity field modeling methods require observations derived from a harmonic function, i.e. in a mass-free environment above the geoid, the harmonic correction is applied to the gravity anomaly points below the mean elevation surface; for details see Forsberg (1984). The geoid "restore" signal is computed by Fourier methods (for details see Forsberg, 1984, 1985). In RTM method the resolution of the mean elevation surface is controlled by the user, through a suitable low-pass filter. Ideally such a filter should correspond to the equivalent resolution of the highest spherical harmonic expansion degree in the reference potential.

The Stokes/Molodensky' formula (Moritz, 1980, p. 387) is

$$\zeta = \frac{R}{4\pi\gamma} \iint_{\sigma} (\Delta g + g_1) S(\psi) d\sigma, \quad (2)$$

where ζ is quasi-geoid, R is the mean Earth radius, γ is the normal gravity at the normal height, σ is the unit sphere, $S(\psi)$ is the Stokes' function with argument ψ as the geocentric angle, Δg is the surface gravity anomalies, g_1 is the first term in the Molodensky expansion. Equation (2) is modified using reduced surface gravity anomalies (Δg_{res}), obtained removing the contribution of an EGM and terrain effects from the surface gravity anomalies (Δg), instead

of Δg to obtain the residual quasi-geoid contribution (ζ_{res}) by the formula,

$$\zeta_{res} = \frac{R}{4\pi\gamma} \iint_{\sigma} (\Delta g_{res} + g_1) S(\psi) d\sigma. \quad (3)$$

When the RTM reduction is used, the Molodensky g_1 term will generally be insignificant (Forsberg and Sideris, 1989; Schwarz et al., 1990) and the formula converts into the conventional Stokes' formula for the geoid, in principle applied to gravity field quantities at the geoid. The evaluation of Stokes' formula is done using 2-D spherical FFT for details of the methods see Schwarz et al. (1990) and Forsberg and Sideris (1993). In the 2-D spherical FFT method, Stokes' integral is evaluated over the whole gravity anomaly area by a series of convolutions, each accurate around a certain reference latitude. To keep the inherently highly accurate Gravity Recovery And Climate Experiment (GRACE) gravity field information in EGM2008 (Pavlis et al., 2008) from being overruled by the influence from terrestrial gravity data, the integral should use modified Stokes' kernels, e.g., as the modified Wong-Gore kernel (Wong and Gore, 1969) described by Forsberg and Olesen (2010).

The LSC method also uses the RCR technique (Forsberg and Tscherning, 1981), as the data to be used for covariance function estimation and the subsequent LSC step are required to be smooth with small variance in order to properly interpret the error estimates. The LSC method can handle heterogeneous observations to estimate gravity field components and their standard errors, such as geoid heights (Tscherning, 1982). The LSC method takes into account data located at different altitudes through the use of a spatial covariance function. In the LSC method, a limitation, however, has been that as many equations as the number of data have to be solved. Therefore, we used a limited number of gravity data selected at approximately 2 km resolution for the implementation of the LSC method concerning computational capabilities, which are also used by the 2-D FFT and LSMS methods as identical data. First, empirical covariances are computed and subsequently these values are fitted to the model covariance function of Tscherning-Rapp (Tscherning and Rapp, 1974). The residual quasi-geoid undulations are determined by the LSC method, where the required auto- and cross-covariance functions are computed by covariance propagation from the analytically modelled local covariance function represented as follows:

$$\begin{aligned} cov(T_P, T_Q) = & a \sum_{i=2}^N \left[\frac{R_2^E}{r_P r_Q} \right]^{i+1} \sigma_i^2 P_i(\cos\psi) \\ & + \sum_{i=2}^N \left[\frac{R_2^B}{r_P r_Q} \right]^{i+1} \frac{A}{(i-1)(i-2)(i+4)} P_i(\cos\psi), \quad (4) \end{aligned}$$

where P and Q are two points separated by a spherical distance ψ from each other and r_P, r_Q are the distances of the two points

from the geocenter, R_B is the radius of Bjerhammar sphere and σ_t^2 is the error degree variance. The covariance parameters a (scale parameter), A (a constant parameter in units of (m/sn)⁴) and the Bjerhammar radius R_B are determined using an iterative non-linear adjustment (Knudsen, 1987).

2.2.2. Least Squares Modification of Stokes' Formula (LSMS)

The least squares modification of Stokes' formula (LSMS) (Sjöberg, 2003) to compute a gravimetric model, includes a least squares (stochastic) kernel modification with additive corrections for the topography, downward continuation, the atmosphere and the ellipsoidal shape of the Earth. The LSMS method has been presented under several different versions during the years (see e.g. Sjöberg, 2003). Ågren et al. (2009a) clearly describes the LSMS method for the estimation of geoid heights, as well as the transformation of the method to estimate height anomalies. As we aim to determine height anomalies, we used the version applied by Ågren et al. (2009a) by using the combined estimator for the height anomaly:

$$\zeta = \frac{R}{4\pi\gamma} \iint_{\sigma_0} S^M(\psi) \Delta g d\sigma + \frac{R}{2\gamma} \sum_{n=2}^M (s_n + Q_n^M) \Delta g_n^{EGM} + \delta\zeta_{COMB} + \delta\zeta_{DWC} + \delta\zeta_{ATM}^{COMB} + \delta\zeta_{ELL}, \quad (5)$$

where σ_0 is the spherical cap, R is the mean Earth radius, γ is mean normal gravity, $S^M(\psi)$ is the modified Stokes' function, s_n are the modification parameters, M is the maximum degree of the EGM, Q_n^M are the Molodensky truncation coefficients and Δg_n^{EGM} is the Laplace surface harmonic of the gravity anomaly determined by the EGM of degree n . The four additive corrections are shown to the right in equation (5), where the combined topographic effect $\delta\zeta_{COMB} = 0$ (Sjöberg, 2000) and $\delta\zeta_{DWC}$, $\delta\zeta_{ATM}^{COMB}$ and $\delta\zeta_{ELL}$ represent the downward continuation effect, atmospheric and ellipsoidal corrections, respectively. See Ågren et al. (2009a) for the formulas of the atmospheric and ellipsoidal corrections.

The downward continuation effect $\delta\zeta_{DWC}$ is

$$\delta\zeta_{DWC}(P) = 3 \frac{\zeta_P^0}{r_P} H_P + \frac{R}{2\pi} \sum_{n=2}^M (s_n + Q_n^M) \left[\left(\frac{R}{r_P} \right)^{n+2} - 1 \right] \Delta g_n^{EGM}(P) + \frac{R}{4\pi\gamma} \iint_{\sigma_0} S^M(\psi) \left(\frac{\partial \Delta g}{\partial r} \Big|_Q (H_P - H_Q) \right) d\sigma_Q, \quad (6)$$

where P is the computation point, $r_P = R + H_P$, ζ_P^0 is an approximate value of the quasi-geoid height and Q is the running point in Stokes' integral, σ_0 is the spherical cap, R is the mean Earth radius, γ is mean normal gravity, $S^M(\psi)$ is the modified Stokes' function, s_n are the modification parameters, M is the maximum degree of the EGM, Q_n^M are the Molodensky truncation coefficients and Δg_n^{EGM} is the Laplace surface harmonic of the

gravity anomaly determined by the EGM of degree n (Ågren et al., 2009a).

Ågren et al. (2009a) points out that Equations (5) and (6) are equivalent to analytical continuation to point level using the g_1 term in Moritz (1980, p. 387) except that they differ from Moritz' in that least squares modification of Stokes' formula is utilised with improved atmospheric and ellipsoidal corrections.

One problem with using the combined quasi-geoid estimator in Eq. (5) is that Stokes' quadrature is made on the rough surface gravity anomaly, which results in large discretisation errors (Ågren et al., 2009a). However, by taking advantage of the remove-compute-restore philosophy for the gridding of a comparatively dense gravity anomaly grid using a smoothing topographic correction, such errors can be counteracted (Sjöberg, 2003). This makes it possible to take advantage of the high-frequency information available in the Digital Elevation Model (DEM). However, a practical drawback here is that dense gravity anomaly grids are required in rough mountain areas (Ågren et al., 2009a). One advantage of the LSMS method is that the "real" magnitude of the corrections becomes apparent, i.e. the sum of the additive corrections is equal to the quasi-geoid errors obtained in case no corrections are applied at all (Ågren et al., 2009a).

Choosing a suitable EGM and modification parameters s_n are essential steps in the determination of a quasi-geoid model using the LSMS formula. We need to estimate the signal and error degree variances of the EGM and terrestrial gravity to be able to estimate the least-squares modification coefficients. The signal degree variances for the degrees above the EGM are generated using the Tscherning and Rapp (1974) model. In this study, the error degree variances are chosen for a model consisting of band limited white noise and correlated noise with a reciprocal distance covariance function. Another important parameter is the spherical radius of the integration cap σ_0 in Eq. (5).

3. Computation of regional quasi-geoid models

As previously mentioned, concerning the computational capabilities for the implementation of the LSC method, A limited number of 59097 gravity points are randomly selected at $0.02^\circ \times 0.025^\circ$ resolution (pixel binning to approximately 2 km resolution) (Fig. 2), to be used as identical input data for all three quasi-geoid determination methods. This computational strategy can be criticized, as in reality only LSC needs to be limited by the number of observations.

3.1. Regional Quasi-Geoid Model Determination Using the RCR Technique

The EGM2008 is computed to degree 360. The terrain effects are computed using 3" SRTM data with respect to a mean elevation surface of 30', constructed by a Gaussian filter corresponding to the resolution of highest spherical harmonic expansion degree of the EGM. The EGM and terrain effects are subsequently

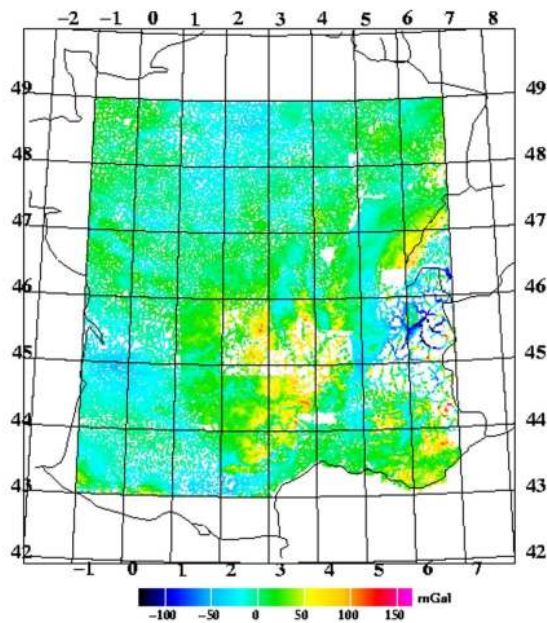


Figure 2. The selected 59097 surface gravity anomalies at $0.02^\circ \times 0.025^\circ$ resolution (pixel binning to approx. 2 km resolution) used as identical input for the implementation of all three quasi-geoid determination methods

subtracted from the gravity data. The reduced gravity data are subsequently gridded in the data coverage region (Fig. 2) to a grid of $0.02^\circ \times 0.025^\circ$ resolution by LSC.

The 2-D spherical FFT conversion was done using zero-padding in a zero-padded grid of dimension 600×640 data points, using 3 reference latitude parallels. The RTM geoid terrain effects are subsequently restored using height anomaly terrain effects computed by FFT in a similar grid, and finally the gravimetric quasi-geoid was obtained by adding the geoid EGM2008 effects, computed at the level of the topographic surface. We first computed the quasi-geoid without using any modification of Stokes' formula. In this case, we found a standard deviation of 3.9 cm between the 2-D FFT derived quasi-geoid model and GPS-levelling data using a 1-parameter fit (Table 3). Subsequently, the modification parameters are investigated in comparison with the GPS-levelling data which results in a selection of an optimal degree band of 80-90, in good agreement with the estimated accuracy of GRACE (Tapley et al., 2005). In this case, a standard deviation of 3.0 cm is found between estimated gravimetric quasi-geoid model and the GPS-levelling data using a 1-parameter fit (Table 3).

For the computation of quasi-geoid model by the LSC method, residual gravity anomalies are used for the empirical covariance function estimation. Subsequently, the model covariance function is estimated using the covariance function model of Tscherning and Rapp (1974) through the program the COVFIT (Knudsen, 1987). It is found to be a quite good compromise for the covariance function

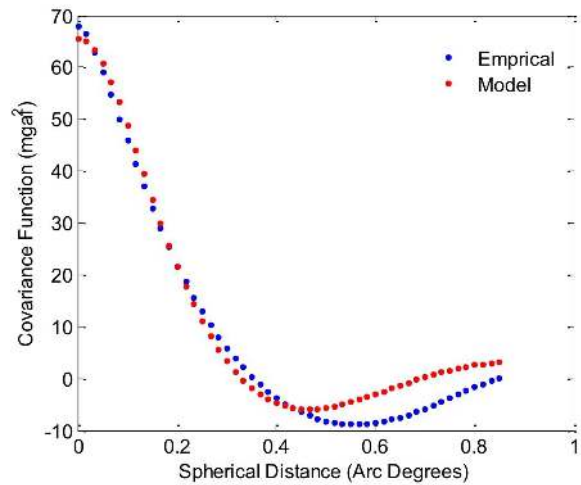


Figure 3. Signal empirical (blue) and model (red) regional covariance function of reduced gravity anomalies after the removal of the contribution of EGM2008 to degree 360 and terrain effects with respect to a mean elevation surface at $30'$ resolution

Table 1. The fitted covariance function parameters, R_E is the mean radius of the Earth

Description of Dataset	$R_E - R_B$ (km)	Scale factor (a)	Variance (mgal^2)
Reduced gravity anomaly	-7.4	2.05	69.4

of the entire area as it is evident from Fig. 3. The estimated covariance function parameters are shown in Table 1.

These parameters (Table 1) are used as input for GEOCOL17 program of GRAVSOFTE package (Forsberg and Tscherning, 2008). In addition, the observation standard error of the reduced gravity anomalies is set to 1.0 mgal as Duquenne (2007) suggested the accuracy of gravity values as 0.25 0.75 mGal which could worsen up to 1 or 2 mGal due to errors in position or inconsistencies with the digital terrain model. The final quasi-geoid model is obtained after restoring the geoid restore effects from RTM and EGM to the residual quasi-geoid model obtained from the LSC method. A standard deviation of 3.4 cm is found between the quasi-geoid model determined by the LSC method and the GPS-levelling data using a 1-parameter fit (Table 3).

3.2. Regional Quasi-Geoid Model Determination Using the LSMS Method

A remove-grid-restore strategy is utilised to reduce the discretisation errors during the gridding operation while preparing the input data for the LSMS method (Ågren et al., 2009a). After adding the EGM2008 effects to degree and order 360 and the RTM effects to the gridded reduced gravity anomalies used by

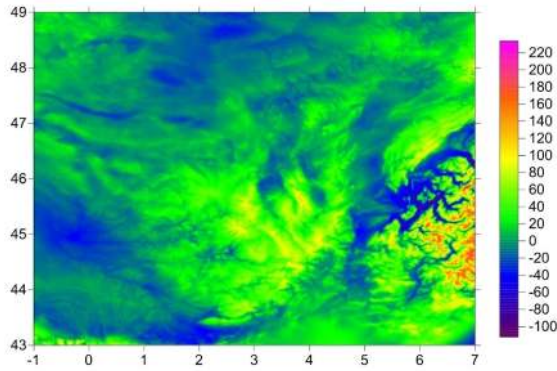


Figure 4. The gridded free air gravity anomalies (mgal) prepared as input for the LSMS method

2-D Spherical FFT method, the gridded surface gravity anomaly data at $0.02^\circ \times 0.025^\circ$ resolution (approximately at 2 km resolution) (Fig. 4) are obtained as input data for the LSMS method. The spherical harmonic coefficients for the global topography are needed to compute the combined atmospheric correction. A worldwide $15^\circ \times 150^\circ$ DEM is first derived from SRTM30plus spherical harmonic coefficients are then estimated to the maximum degree 720 using numerical integration according to the midpoint rule (Ågren et al., 2009a).

We implemented the LSMS method using EGM2008 to degree 360, setting the cap size using the radius $\psi_0 = 1^\circ$. We used a relatively small cap size, as the LSMS method results in final quasi-geoid computation area smaller than the gravity coverage area, omitting the borders as large as the radius of the cap size. A larger cap size would make the quasi-geoid model to be determined at a very limited part of the test area (only in the central area). We keep the difference between the east-west borders of gravity data and quasi-geoid target area as 1.5° since the meridians converge towards the poles. This implies that the Stokes' integration is made over the whole spherical cap. Therefore, the chosen cap size ($\psi_0 = 1^\circ$) resulted in a quasi-geoid model area for the LSMS method of $44^\circ - 48^\circ$ to $0.5^\circ - 5.5^\circ$ E, which is the same quasi-geoid area as is used for all three methods. We adopt the modification approach used by Ågren et al. (2009a) based on the determination of the crossing point K of the error degree variances of the EGM and terrestrial gravity. The choice of K amounts to specifying the upper degree for which the GRACE model is believed to be better than the terrestrial gravity anomalies. This corresponds to the specification of the degree in the use of modified Wong and Gore kernel used by 2-D spherical FFT method (Forsberg and Olesen, 2010). We found that $K=85$ yielded a standard deviation of 3.5 cm between LSMS derived quasi-geoid model and GPS-levelling using a 1-parameter fit, indicating that $K=85$ is realistic taking into account the error characteristics of GRACE (Tapley et al., 2005). The corresponding degree variance models are specified in detail in

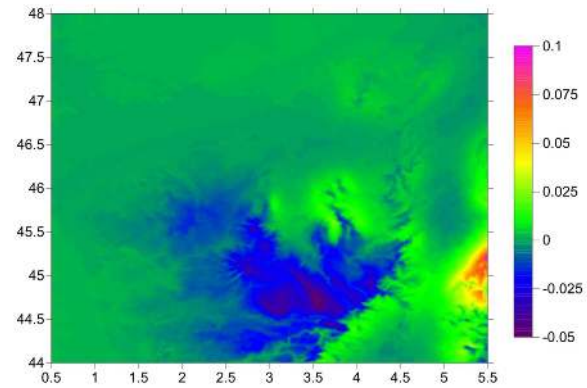


Figure 5. Downward continuation correction (m)

Table 2. Degree variance models used in the quasi-geoid determination based on the method used by Ågren et al. (2009a)

Type of Variance	degree	Description
Signal		Tscherning and Rapp (1974). Degree variances rescaled using the factor 0.5^2
EGM error		Published ones for EGM2008 (Pavlis et al. 2008). Degree variances rescaled using the factor 0.4^2
Terrestrial gravity error		Combination of the reciprocal distance and white noise models (Ågren et al., 2009a). The reciprocal distance part is specified by the standard deviation 1 mGal and the correlation length 0.2. The white noise part is specified by the standard deviation 1 mGal and the Nyquist degree 10800

Table 2. The downward continuation (DWC) correction is shown in Fig. 5. DWC correction is maximum in the mountainous areas (up to 10 cm) and small (at a few cm level) in areas with smooth topography. The atmospheric and ellipsoidal corrections are at 1–2 mm level and therefore they are considered to be negligible for the study area and not shown.

The standard deviation of 3.5 cm of the differences between the LSMS derived quasi-geoid model and quasi-geoid heights of the GPS-levelling data is slightly larger than the value of 3.3 cm found by Ågren et al. (2009b) using the LSMS method over the same test area. This is most likely due to the use of data having different resolution and the differences in the choice of the parameters of the LSMS method. Ågren et al. (2009b) adopted the LSMS method using a reference model of EIGEN_GL04C up to degree and order 360 with modification parameters obtained choosing $M=360$ (see Eq. (5)), without implementing the modification method suggested by Ågren et al. (2009a). Furthermore, Ågren et al. (2009b) used free-air gravity anomalies selected at $0.01^\circ \times 0.01^\circ$ resolution, set the standard error of the gravity anomalies to 0.5 mgal and

Table 3. Comparison of quasi-geoid models with GPS-levelling. Statistics for the 75 GPS-levelling residuals after a 1- and a 4-parameter fit. Note that max, min vales are given after the mean value is subtracted from differences for the 1-parameter fit. ⁽¹⁾ denotes that no modification of Stokes' integral is applied for the FFT method, while ⁽²⁾ indicates that the FFT method applies the modification. Unit is in metre

Quasi-geoid models	# par	Mean	Max.	Min.	Std. dev.
FFT ⁽¹⁾	1	-0.183	0.068	-0.118	0.039
	4	0.000	0.067	-0.065	0.031
FFT ⁽²⁾	1	-0.133	0.058	-0.076	0.030
	4	0.000	0.058	-0.067	0.029
LSMS	1	-1.040	0.079	-0.078	0.035
	4	0.000	0.095	-0.051	0.024
LSC	1	-0.154	0.070	-0.086	0.034
	4	0.000	0.064	-0.065	0.031
EGM2008	1	-0.109	0.098	-0.073	0.036
	4	0.000	0.138	-0.068	0.029

Table 4. Inter-comparison of quasi-geoid models. Note that max., min vales are given after the mean value is subtracted from differences. ⁽¹⁾ denotes that no modification of Stokes' integral is applied for the FFT method, while ⁽²⁾ indicates that the FFT method applied modification. Unit is in metre

Quasi-geoid models	Mean	Max.	Min.	Std. dev.
FFT ⁽¹⁾ —LSC	0.03	0.09	-0.05	0.03
FFT ⁽²⁾ —LSC	-0.03	-0.12	-0.13	0.04
LSMS—FFT ⁽²⁾	0.94	0.19	-0.33	0.08
LSMS—LSC	0.90	0.23	-0.20	0.07

Table 5. Comparison of quasi-geoid models with EGM2008. Note that max, min vales are given after the mean value is subtracted from differences. ⁽¹⁾ denotes that no modification of Stokes' integral is applied for the FFT method, while ⁽²⁾ indicates that the FFT method applied the modification. Unit is in metre

Quasi-geoid models	Mean	Max.	Min.	Std. dev.
FFT ⁽¹⁾ —EGM2008	0.06	0.26	-0.25	0.08
FFT ⁽²⁾ —EGM2008	-0.01	0.31	-0.18	0.07
LSC—EGM2008	0.03	0.22	-0.22	0.06
LSMS—EGM2008	0.93	0.06	-0.20	0.03

used a cap size of $\psi_0 = 2^\circ$ that was achieved extending the gravity anomaly coverage area from 43° – 49° N and 1° W– 7° E to 42° – 50° N and 3° W– 9° E. This was carried out by generating free-air gravity anomalies from EIGEN_GL04C up to degree and order 360 and RTM effect outside the area covered with data. In the present study, we did not prefer to extend the gravity anomaly coverage area using a similar approach and therefore selected the cap size as $\psi_0 = 1^\circ$. We sampled the quasi-geoid model computed by Ågren et al. (2009b) using the LSMS method at the same resolution as the quasi-geoid model computed by the LSMS method in the present study. The differences of the two quasi-geoid models showed a standard deviation of 2 cm, with corresponding values of 4 cm, -5 cm and 13 cm for the mean, minimum and maximum values.

4. Quasi-geoid difference analysis

In order to test the performance of the three different quasi-geoid determination methods, their corresponding quasi-geoid undulations are compared with the quasi-geoid heights of the 75 GPS-levelling points situated in the central area (Fig. 1(b)). Except a mean difference between the gravimetric quasi-geoid models and the quasi-geoid heights of the GPS-levelling points, all three methods agree well with the GPS-levelling data in the order of 3–3.5 cm using a 1-parameter fit provided that the modification of the Stokes' integral is implemented by the FFT method (Table 3). There is a large difference between LSMS and RCR methods in terms of mean difference between the gravimetric quasi-geoid models and GPS-levelling quasi-geoid undulations. This is due to the differences in the coordinate reference system used. The agreement between FFT derived quasi-geoid model and the GPS-levelling quasi-geoid heights drastically improves when the modification is used (FFT⁽²⁾). In case of using a 1-parameter fit to the differences between the gravimetric and GPS-levelling quasi-geoid heights, the FFT method using kernel modification (FFT⁽²⁾) performs best with 3.0 cm r.m.s whereas the LSC method, the LSMS method and EGM2008 quasi-geoid heights shows 3.4 cm, 3.5 cm and 3.6 cm (Table 3).

In order to investigate the tendencies of the residuals between the gravimetric quasi-geoid models and quasi-geoid heights of GPS-levelling points after a 1-parameter fit, the differences between the quasi-geoid models and the quasi-geoid heights of GPS-levelling in the observation points are shown in Figs. 6(a)–6(d), where it can be seen that the agreement is good. The pattern of the residuals for the FFT (Fig. 6(a)) and the LSC (Fig. 6(b)) methods are similar, not showing any systematic tendency. On the other hand, the residuals for the LSMS method (Fig. 6(c)) and EGM2008 model (Fig. 6(d)) have a similar pattern, showing a remaining significant systematic slope in the direction from north-east to south-west, which is not the case in the FFT residuals (Fig. 6(a)). Therefore, we use 4-parameter transformation to model the residuals between the quasi-geoid models and the GPS-levelling quasi-geoid heights at observation points. The statistics after a 4-parameter transformation are given

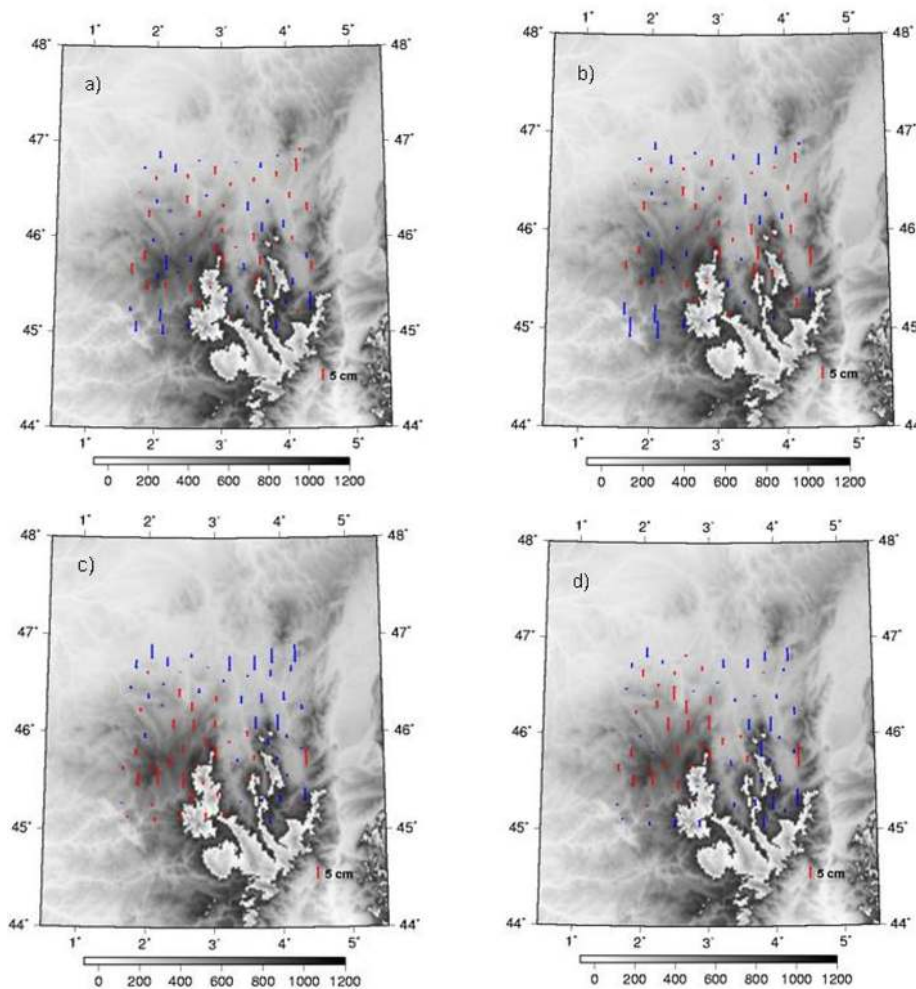


Figure 6. GPS-levelling residuals after a 1-parameter transformation using for the quasi-geoid models obtained using: a) FFT⁽²⁾; b) LSC; c) LSMS methods; d) EGM2008 to degree and order 2190. The scale is given by the 5 cm arrow to the South-East. In the background heights (unit is in metre) of quasi-geoid computational points selected at $0.02^\circ \times 0.025^\circ$ resolution (approximately at 2 km spacing) from 3rd Shuttle Radar Topography Mission (SRTM) over the quasi-geoid comparison area are shown

in Table 3. The 4-parameter fit corresponds to estimating the zero and first spherical harmonic degree terms using the observation equation (Section 2–18 in Heiskanen and Moritz, 1967),

$$\zeta_{GPS-Levering} - \zeta_{Gravimetre} - \epsilon = x_1 + x_2 \cos\phi \cos\lambda + x_3 \cos\phi \sin\lambda + x_4 \sin\phi, \quad (7)$$

where x_1 , x_2 , x_3 and x_4 are the four parameters, ϕ is the latitude and λ is the longitude. In the 1-parameter fit only the x_1 term is estimated. Using a 4-parameter fit, the LSMS method performs best with a 2.4 cm, whereas the FFT method, LSC method and EGM2008 show 2.9, 3.1 and 3.1 cm, respectively, in terms of the standard deviation between gravimetric and GPS-levelling quasi-geoid heights at observation points. The significant systematic

slope shown on Fig. 6(c) is absorbed in the 4-parameter fit, leading to better fit for LSMS than for FFT.

The mean differences and the standard deviations of the quasi-geoid differences between the methods are shown in Table 4. The standard deviation of the differences between the FFT method without applying the modification of Stokes' integral (FFT⁽¹⁾) and the LSC method is 3 cm. When the Stokes' modification is applied by the FFT method (FFT⁽²⁾), in the spectral band of 80–90 of the EGM2008, a standard deviation of 4 cm is obtained. This is potentially due to the fact that the LSC method is a prediction method and does not use Stokes' integral and thus the use of modification kernel is not possible. The standard deviation of the differences between the LSMS method and the FFT⁽²⁾ method is 8 cm, which is relatively large. Similarly, standard deviation between the quasi-geoid models of the LSMS and the LSC methods

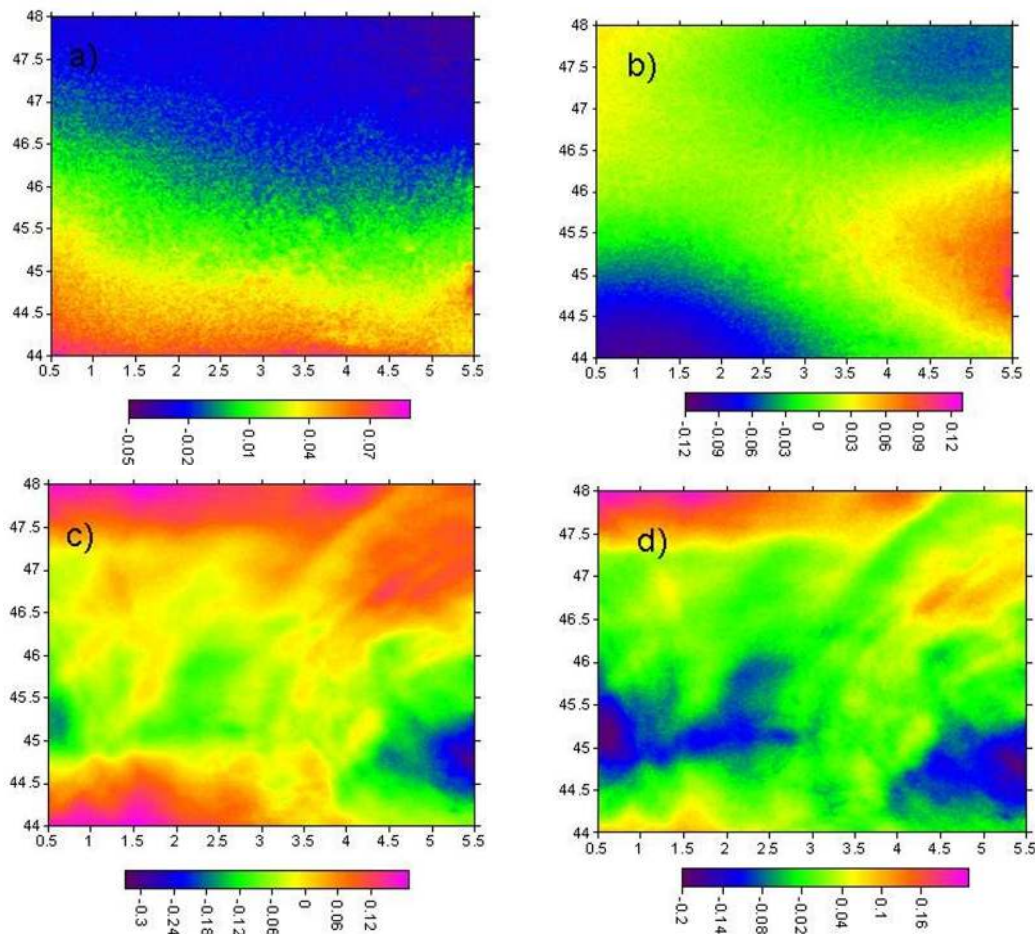


Figure 7. Inter-comparison of the quasi-geoid models. a) FFT⁽¹⁾ minus LSC; b) FFT⁽²⁾ minus LSC; c) LSMS minus FFT⁽²⁾; f) LSMS minus LSC. Unit is in metre

is 7 cm.

Furthermore, we used EGM2008 as a ‘standard’ over the study area, against which the performance of quasi-geoid models based on the three different methods are compared. Table 5 shows that the best agreement between the quasi-geoid models and the EGM2008 is observed for the LSMS method, showing a standard deviation of 3 cm. The worst agreement is for the FFT⁽¹⁾ method with a standard deviation of 8 cm while the LSC method gives a standard deviation of 6 cm. Obviously, this says nothing about the real accuracy of the models, as EGM2008 also has errors (but actually performs remarkably well, cf. Table 3).

In order to investigate the spatial variation of the differences between the quasi-geoid models obtained by three methods with and without applying modification of Stokes’ function for the FFT method are shown in Figs. 7(a)–7(d). The differences between quasi-geoid models obtained from the FFT method without the use of modification (FFT⁽¹⁾) and from the LSC method has a pattern indicating a slope in the north-south direction (Fig. 7(a)). This may

potentially be due to the inherent periodicity assumption in the FFT method, while collocation implicitly assumes zero values outside the data area. Fig. 7(b) shows that the differences between the FFT and the LSC methods increases when a modification is implemented by the FFT method (FFT⁽²⁾). There is a large difference between the FFT⁽²⁾ and the LSMS methods reaching to 33 cm in a mountainous area (Fig. 1(b) and Fig. 7(c)). Fig. 7(d) shows the differences between the LSMS and the LSC methods, indicating large differences also in some flat areas. Maximum differences between the RCR and the LSMS methods occur in the mountainous area around 45°N–5°E. As we do not have GPS-leveling data over this area which is near the Alps, it is not possible to detect which method is the best here.

On the other hand, it is not clear whether the differences between the quasi-geoid models are due to data gaps or to problems with the methods over mountainous regions or both. A potential source of discrepancy between the FFT and the other two methods is that the Stokes’ integration by the FFT method is carried out using the

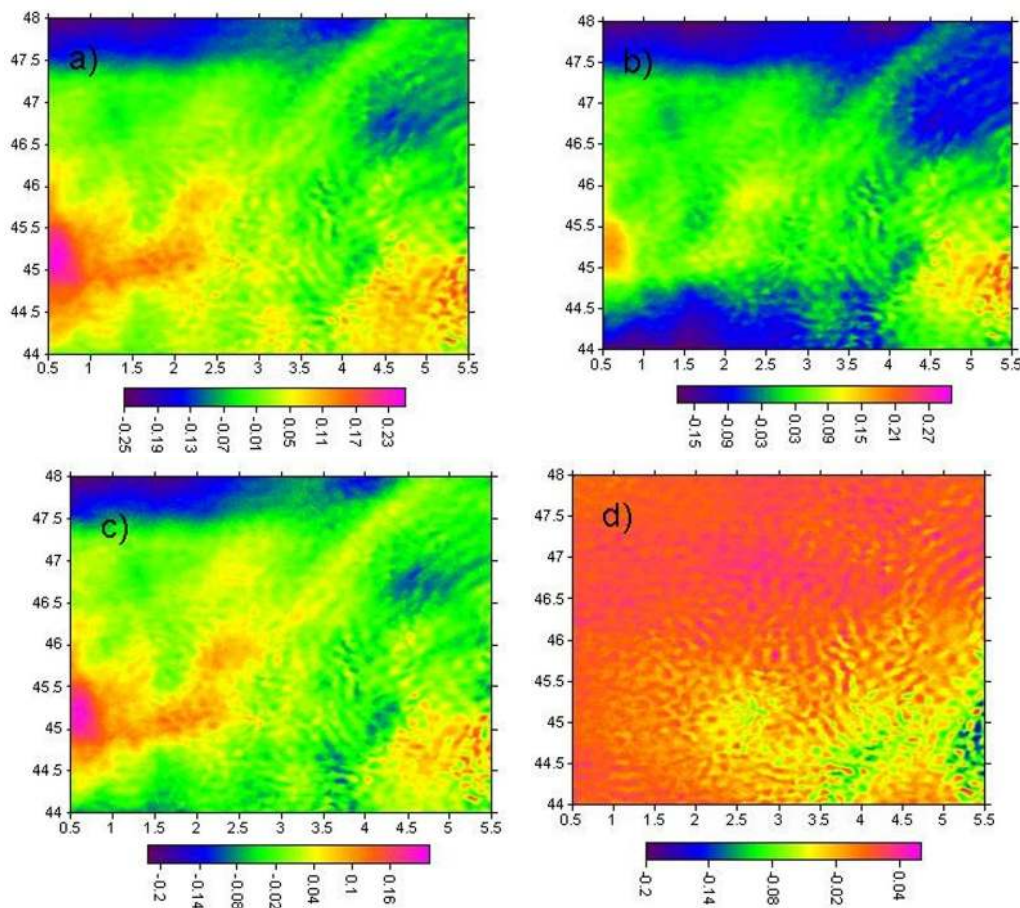


Figure 8. Comparison of the quasi-geoid models with EGM2008 quasi-geoid heights. a) $\text{FFT}^{(1)}$ minus EGM2008; b) $\text{FFT}^{(2)}$ minus EGM2008; c) LSC minus EGM2008; d) LSMS minus EGM2008. Unit is in metre

reduced surface gravity anomalies ignoring the g_1 term in Eq. (2). However, this term is known to be small when terrain-reduced data are used (Forsberg and Sideris, 1989; Schwarz et al., 1990). Another issue is the fact that the LSMS method requires a comparatively dense surface gravity anomaly grid, which is computed from the observed gravity anomalies using a remove-compute-restore method for the gridding; see further Section 2.2.2. Here the grid resolution in question was chosen to approximately 2 km, which is likely too sparse in the high mountains. Notice that this does not mean that the LSMS method requires denser gravity observations than the other two methods.

Furthermore, we compare the quasi-geoid model EGM2008 to degree 2190 with the quasi-geoid models by the three methods in Figs. 8(a)–8(d). The differences between the quasi-geoid models obtained by the FFT method, when no modification is used, and EGM2008 are relatively large both in flat and mountainous areas (Fig. 8(a)). When the FFT method is used with the use of modification ($\text{FFT}^{(2)}$), the differences decrease in the flat areas but still exist over the mountains (Fig. 8(b)). The differences between

the LSC derived quasi-geoid heights and the EGM2008 have a similar pattern with the differences between $\text{FFT}^{(1)}$ and EGM2008 (Fig. 8(c)). The differences between the LSMS derived quasi-geoid heights and the EGM2008 quasi-geoid heights are relatively small, except in the mountainous areas where the differences reach to 20 cm (Fig. 8(d)). However, these differences are mostly of a high frequency nature, corresponding to the different resolutions of the two models (0.02° for LSMS and $\approx 0.08^\circ$ for EGM2008).

5. Conclusions

In this study, two methods using the RCR technique (2-D Spherical FFT and LSC) and the LSMS technique are numerically tested over Auvergne test region. As a result, all three methods give comparable results when compared to GPS-levelling data, with the FFT method giving best results after a 1-parameter fit. The standard deviations for the differences between the quasi-geoid models and GPS-levelling data are 3.0 cm, 3.5 and 3.4 cm for the 2-D Spherical FFT, LSC and LSMS methods after a 1-parameter fit, consistent with the accuracies of GPS-levelling (3.2 cm). In case of

using a 4-parameter fit, the LSMS method gives the best agreement with GPS-levelling with 2.4 cm standard deviation. The reason for the remarkable improvement of LSMS after using a 4-parameter fit instead of 1-parameter fit is that the significant north-east to south-west slope in the residuals of the 1-parameter fit is absorbed by the 4-parameter fit.

These results provide only marginally better agreement with GPS-levelling than EGM2008 shows. This illustrates the remarkably high quality of EGM2008 in well-covered gravity data areas like France. When the quasi-geoid models are compared with each other, although they agree well over the more central areas, they differ up to 33 cm over the mountainous areas near the Alps. Comparison of quasi-geoid models with EGM2008 quasi-geoid heights suggest that the LSMS method gives the best agreement with EGM2008 in term of the standard deviation over the mountainous region near the Alps. It would therefore be useful to extend the present investigations to the Alps, if gravity and precise GPS-levelling data could be released from this region as well in order to properly understand the large differences between the methods which is a very important future work.

6. Acknowledgement

The authors wish to thank late Prof. H. Duquenne of IGN for the availability of the Auvergne dataset. The first author is supported by The Scientific and Technological Research Council of Turkey (TÜBİTAK) for a one-year post-doctoral scholarship on a research about "Precise Geoid Determination, Airborne and Satellite Gravity Field Modelling" carried out at National Space Institute, Technical University of Denmark.

References

- Ågren J., Sjöberg L.E., Kiamehr R., 2009a, The new gravimetric quasigeoid model KTH08 over Sweden. *J. of App. Geod.*, 143–153, doi: 10.1515/JAG.2009.015
- Ågren J., Barzaghi R., Carrion D., Denker H., Grigoriadis V.N., Kiamehr R., Sona G., Tscherning C.C., Tziavos I.N., 2009b, Different geoid computation methods applied on a test dataset: results and considerations, Poster presented at Hotine-Marussi Symp., Rome, 6–12 July, 2009
- Barzaghi R., Sanso F., 2009, Report of the International Geoid Service. *Travaux de l'Association Internationale de Geodesie* 2007–9, available at www.iges.polimi.it
- Duquenne H., 2007, A data set to test geoid computation methods. *Harita Dergisi. Special Issue*: 18: 61–65
- Forsberg R., 1984, A Study of Terrain Reductions, Density Anomalies and Geophysical Inversion Methods in Gravity Field Modelling. Reports of the Department of Geodetic Science and Surveying. No. 355. The Ohio State University, Columbus, Ohio
- Forsberg R., 1985, Gravity field terrain effect computations by FFT. *Bull. Geod.* 59: 342–360

- Forsberg R., 2010, Geoid determination in the mountains using ultra-high resolution spherical harmonic models. In: M. E. Contadakis et al. (Eds): *The Apple of Knowledge — In Honour of Prof. Emeritus Prof. D.N. Arabelos*, pp. 101–111, published by Aristotle University of Thessaloniki-Faculty of Rural and Surveying Engineering, Thessaloniki, 2010
- Forsberg R., Tscherning C.C., 1981, The use of Height Data in Gravity Field Approximation by Collocation. *J. Geophys. Res.*, vol. 86, No. B9, 7843–7854
- Forsberg R., Sideris M.G., 1989, On topographic effects in gravity field approximation. In: Keijlsø, Poder and Tscherning (Eds.): *Festschrift to Torben Krarup, Geodætisk Institut Meddelelse (Reports of the Geodetic Institute — Denmark) no. 58*, pp. 129–148
- Forsberg R., Sideris M.G., 1993, Geoid computations by the multi-band spherical FFT approach. *Manuscripta Geodaetica*. 18, pp. 82–90
- Forsberg R., Tscherning C.C., 2008, An overview manual for the GRAVSOF Geodetic Gravity Field Modelling Programs, 2-nd edition, August
- Forsberg R., Olesen A., 2010, Airborne Gravity Field Determination in "Sciences of Geodesy-I Advances and Future Directions", Goachang Xu (Ed), Springer
- Heiskanen W.A., Moritz H., 1967, *Physical Geodesy*. Freeman, San Francisco
- Kiamehr R., Sjöberg L.E., 2010, LSMS-GEOLAB Scientific Software for Precise Geoid Determination Based on the Least-Squares Modification of Stokes' Formula, Technical Manual, Royal Institute of Technology (LSMS), Division of Geodesy, Stockholm
- Knudsen P., 1987, Estimation and Modelling of the Local Empirical Covariance Function using gravity and satellite altimeter data. *Bulletin Geodesique*, vol. 61, pp. 145–160
- Moritz H., 1980, *Advanced Physical Geodesy*, Wichmann, Karlsruhe
- Pavlis N., Holmes S., Kenyon S., Factor J., 2008, An Earth Gravitational Model to Degree 2160: EGM2008. EGU General Assembly 2008, Vienna, Austria, April
- Schwarz K-P., Sideris M.G., Forsberg R., 1990, Use of FFT methods in Physical Geodesy. *Geophysical Journal International*. 100: 485–514
- Sjöberg L.E., 2000, Topographic effects by the Stokes-Helmert method of geoid and quasigeoid determination, *J. of Geod.* 74: 255–268
- Sjöberg L.E., 2003, A computational scheme to model the geoid by the modified Stokes' formula without gravity reductions. *J. of Geod.* 77: 423–432
- Sjöberg L.E., 2005, A discussion on the approximations made in the practical implementation of the remove-compute-restore technique in regional geoid modeling. *J. of Geod.* 78: 645–653, doi: 10.1007/s00190-004-0430-1
- Tapley B., Ries J., Bettadpur S., Chambers D., Cheng M., Condi

F., Gunter B., Kang Z., Nagel P., Pastor R., Pekker T., Poole S. and Wang F., 2005, GGM02 — An improved Earth gravity field model from GRACE, *J. of Geod.* 79: 467—478

Tscherning C.C., Rapp R.H., 1974, Closed Covariance Expressions for Gravity Anomalies, Geoid Undulations, and Deflections of the Vertical Implied by Anomaly Degree-Variance Models. Reports of the Department of Geodetic Science No.

208, The Ohio State University, Columbus, Ohio

Tscherning C.C., 1982, Geoid Determination for the Nordic Countries Using Collocation, Proceedings of the General Meeting of IAG, Tokyo, May 7—15

Wong L., Gore R., 1969, Accuracy of geoid heights from modified Stokes kernels. *Geophys J. Roy Astr. Soc.* 18: 81—91