

Landslides (2012) 9:299–301
DOI 10.1007/s10346-012-0336-6
Published online: 17 May 2012
© Springer-Verlag 2012

Amar Deep Regmi · Kohki Yoshida · Megh Raj Dhital · Krishna Devkota

Erratum to: Effect of rock weathering, clay mineralogy, and geological structures in the formation of large landslide, a case study from Dumre Besi landslide, Lesser Himalaya Nepal

Erratum to: Landslides

DOI 10.1007/s10346-011-0311-7

The original version of this paper, unfortunately, contained several mistakes.

- “Besei” in the article title should read “Besi.” The correct title is given above.
- “Dure Besi” found on the first sentence under “Conclusion” should be spelled as “Dumre Besi.”
- Krishna Devkota’s affiliation should be changed from “Kung Puk National University” to “Kyungpook National University” and the city is “Deagu” instead of “Degu.” The correct affiliation is given below.
- The legends of Figures 2 and 6 are incorrect. The correct figures are given in the following:

The online version of the original article can be found at <http://dx.doi.org/10.1007/s10346-011-0311-7>.

A. D. Regmi · K. Yoshida (✉)

Shinshu University,
Matsumoto, Nagano, Japan
e-mail: kxyoshid@shinshu-u.ac.jp

M. R. Dhital

Tribhuvan University,
Kritipur, Nepal

K. Devkota

Kyungpook National University,
Deagu, South Korea

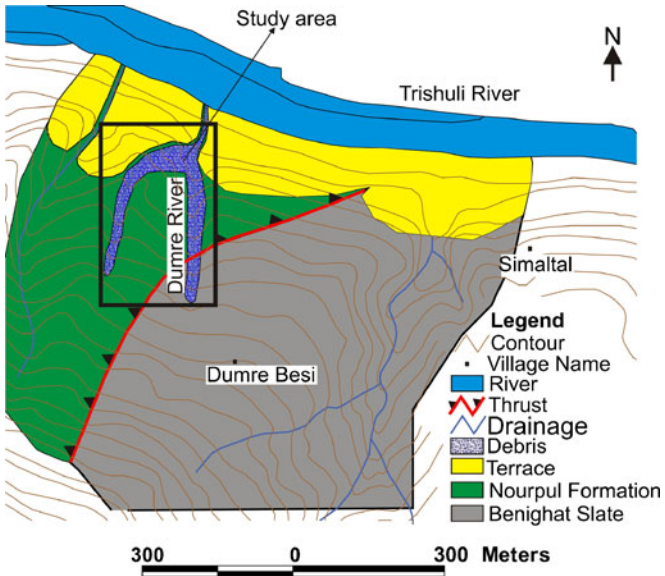


Fig. 2 Geological map of the landslide and its surrounding area

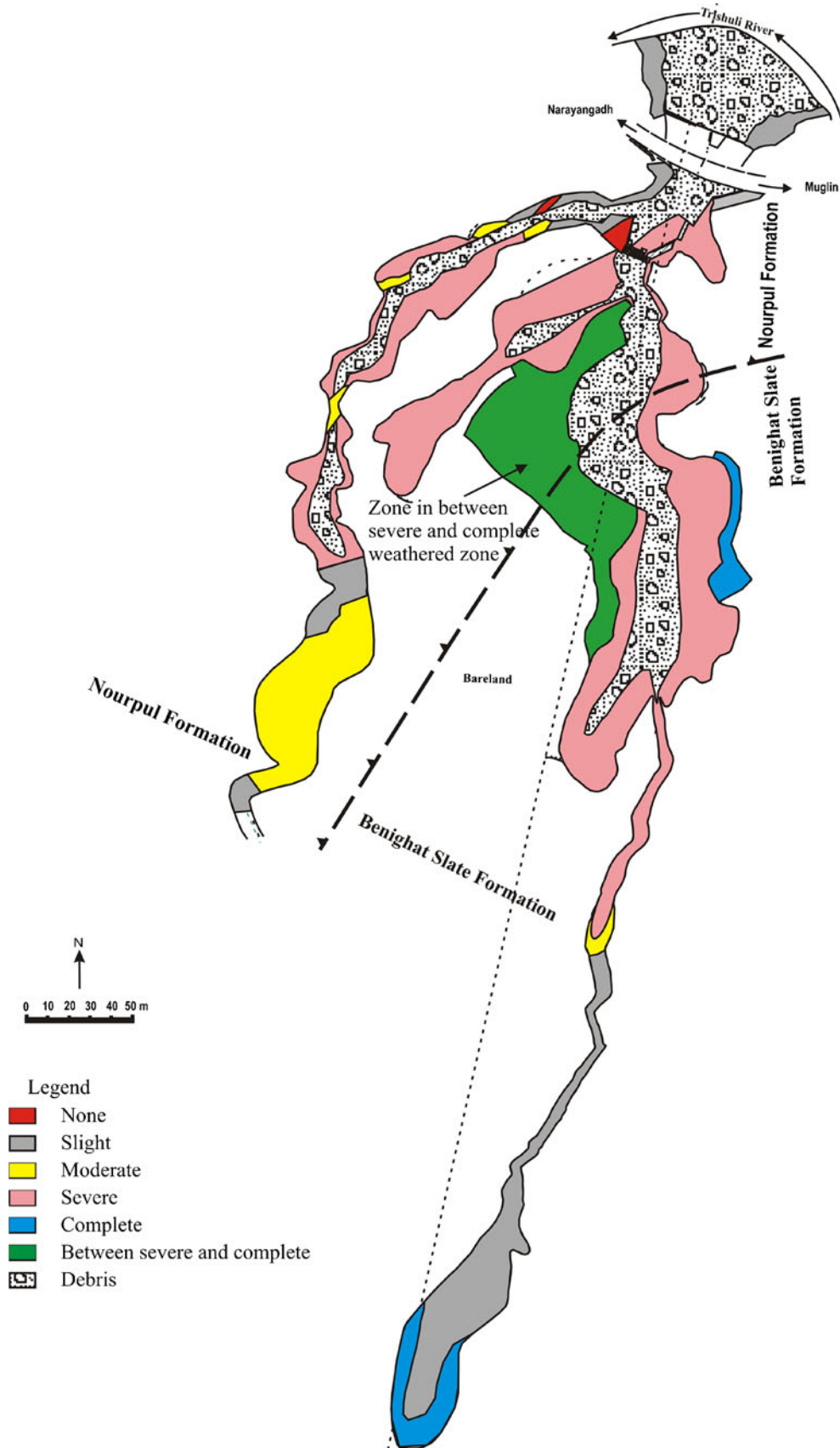


Fig. 6 Map showing the weathering of rocks in the landslide zone