

 Open access • Journal Article • DOI:10.1088/1748-0221/6/01/C01004

## Performance of the Fast Beam Conditions Monitor BCM1F of CMS in the first running periods of LHC — [Source link](#)

R. Schmidt, A. J. Bell, A. J. Bell, E. Castro ...+11 more authors

**Institutions:** University of Geneva, CERN, University of Wisconsin-Madison, Karlsruhe Institute of Technology ...+1 more institutions

**Published on:** 01 Jan 2011 - Journal of Instrumentation (IOP Publishing)

**Topics:** Large Hadron Collider, Beam (structure) and Detector

Related papers:

- [Performance of the Fast Beam Conditions Monitor BCM1F of CMS in the first running periods of LHC](#)
- [Fast beam condition monitor for CMS: Performance and upgrade](#)
- [The CMS Beam Halo Monitor electronics](#)
- [An LHCb general-purpose acquisition board for beam and background monitoring at the LHC](#)
- [Data readout concept and test results for the BCM1F and BSC sub-detectors of CMS](#)

Share this paper:    

View more about this paper here: <https://typeset.io/papers/performance-of-the-fast-beam-conditions-monitor-bcm1f-of-cms-2y63makr5t>

## Performance of the Fast Beam Conditions Monitor BCM1F of CMS in the first running periods of LHC

This article has been downloaded from IOPscience. Please scroll down to see the full text article.

2011 JINST 6 C01004

(<http://iopscience.iop.org/1748-0221/6/01/C01004>)

View [the table of contents for this issue](#), or go to the [journal homepage](#) for more

Download details:

IP Address: 141.34.3.153

The article was downloaded on 18/02/2011 at 10:34

Please note that [terms and conditions apply](#).

TOPICAL WORKSHOP ON ELECTRONICS FOR PARTICLE PHYSICS 2010,  
20–24 SEPTEMBER 2010,  
AACHEN, GERMANY

## Performance of the Fast Beam Conditions Monitor BCM1F of CMS in the first running periods of LHC

R.S. Schmidt,<sup>a,b,1</sup> A.J. Bell,<sup>c,g</sup> E. Castro,<sup>b</sup> R. Hall-Wilton,<sup>c,d</sup> M. Hempel,<sup>a</sup> W. Lange,<sup>b</sup>  
W. Lohmann,<sup>a,b</sup> S. Müller,<sup>c,e</sup> V. Ryjov,<sup>c</sup> D. Stickland<sup>c,f</sup> and R. Walsh<sup>b</sup>

<sup>a</sup>Brandenburgische Technische Universität,  
03046 Cottbus, Germany

<sup>b</sup>DESY,  
15738 Zeuthen & 22607 Hamburg, Germany

<sup>c</sup>CERN,  
1211 Genève 23, Switzerland

<sup>d</sup>University of Wisconsin,  
Madison, WI 53706, U.S.A.

<sup>e</sup>Karlsruher Institut für Technologie,  
76049 Karlsruhe, Germany

<sup>f</sup>Princeton University,  
Princeton, NJ 08544, U.S.A.

<sup>g</sup>Université de Genève,  
1211 Genève, Switzerland

E-mail: [ringo.schmidt@desy.de](mailto:ringo.schmidt@desy.de)

**ABSTRACT:** The Beam Conditions and Radiation Monitoring System, BRM, is implemented in CMS to protect the detector and provide an interface to the LHC. Seven sub-systems monitor beam conditions and the radiation level inside the detector on different time scales. They detect adverse beam conditions, facilitate beam tuning close to CMS, and measure the doses accumulated in different detector components. Data are taken and analysed independently of the CMS data acquisition, displayed in the control room, and provide inputs to the trigger system and the LHC operators. In case of beam conditions dangerous to the CMS detector, a beam abort is induced.

The Fast Beam Conditions Monitor, BCM1F, is a flux counter close to the beam pipe inside the tracker volume. It uses single-crystal CVD diamond sensors, radiation-hard FE electronics, and optical signal transmission to measure the beam halo as well as collision products bunch by

<sup>1</sup>Corresponding author.

bunch. The system has been operational during the initiatory runs of LHC in September 2008. It works reliably since the restart in 2009 and is invaluable to CMS for everyday LHC operation. A characterisation of the system on the basis of data collected during LHC operation is presented.

**KEYWORDS:** Control and monitor systems online; Data acquisition concepts; Radiation-hard electronics

2011 JINST 6 C01004

---

## Contents

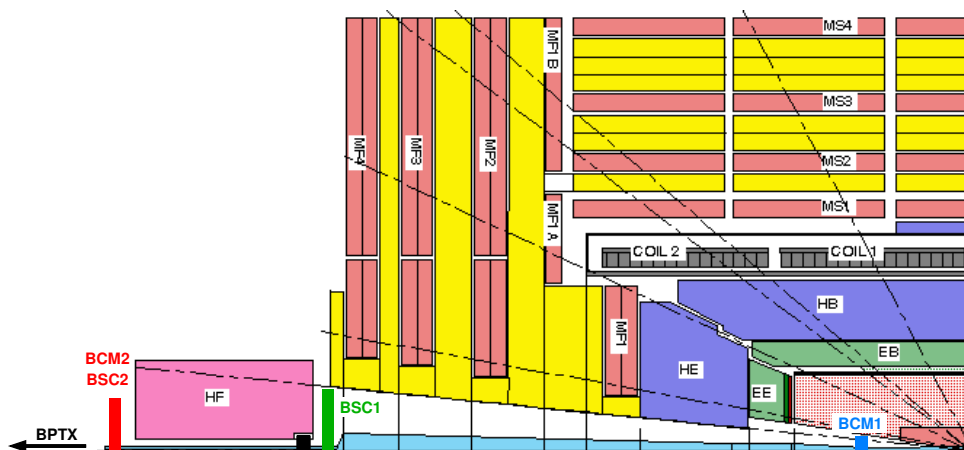
<b>1</b>	<b>The CMS Beam Conditions and Radiation Monitoring System, BRM</b>	<b>1</b>
<b>2</b>	<b>The Fast Beam Conditions Monitor, BCM1F</b>	<b>2</b>
<b>3</b>	<b>Performance and prospects of BCM1F</b>	<b>3</b>
3.1	Signal spectra from the ADC	3
3.2	Timing information from the TDC	4
3.3	Online analysis with scalers	4

---

## 1 The CMS Beam Conditions and Radiation Monitoring System, BRM

The Compact Muon Solenoid (CMS) [1] is a multi-purpose detector experiment at interaction point (IP) 5 of the Large Hadron Collider (LHC) at CERN. Beam losses in the LHC may cause serious harm to detector components, so their advent must be detected in order to avert damages of the detector. A monitoring system is needed that allows diagnosis of adverse beam conditions and can initiate beam aborts or shut down vulnerable detectors, if necessary.

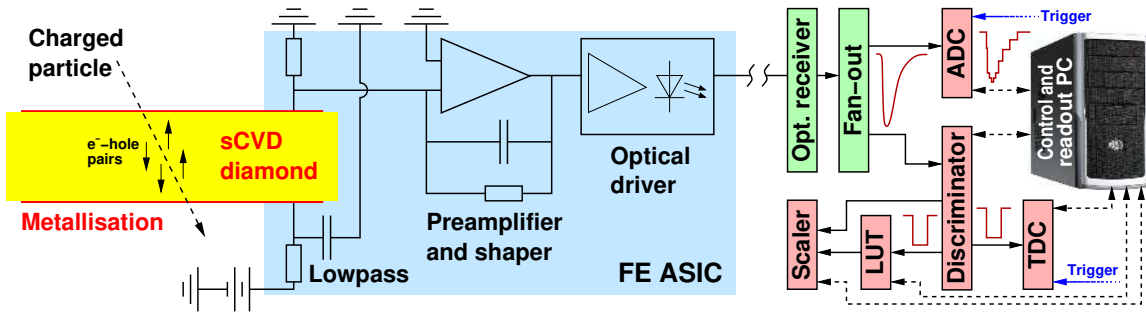
Throughout the CMS detector, the beam conditions and the radiation level are monitored by seven sub-systems working on different time scales [2]. Locations of these systems are indicated in figure 1, and some of their specifications are listed in table 1 [3]. These systems are operated



**Figure 1.** Quadrant of a longitudinal section of CMS with the IP in the bottom right corner. The surrounding layers are the tracker (red), the electromagnetic (green) and the hadronic (blue) calorimeter, both consisting of barrel and endcap, the coil (grey), and the return yoke with interspersed muon chambers (yellow/red). HF is the hadronic forward calorimeter. Along the beam pipe, the positions of BRM sub-systems are indicated (starting at IP, cf. table 1): BCM1 at the blue bar, BSC1 at the green bar, BCM2/BSC2 at the red bar, and BPTX (out of scope). RADMONs and passive elements are distributed throughout the detector.

**Table 1.** Some specifications of the BRM sub-systems, which are ordered by increasing time resolution. RADMON stands for Radiation Monitor, BCM for Beam Conditions Monitor (F: fast, L: leakage), BSC for Beam Scintillation Counter, and BPTX for Beam Pick-up Timing Experiments. The IP is located at  $z = 0$ .

Sub-system	Sensor	Location	Time resolution	Function
Passives	TLD	in CMS and cavern	long-term	monitoring
RADMON	RadFET + SRAM	around CMS	1 s	monitoring
BCM2	pCVD diamond	$z = \pm 14.4$ m	$40 \mu\text{s}$	protection
BCM1L	pCVD diamond	$z = \pm 1.8$ m	$\approx 5 \mu\text{s}$	protection
BSC	scintillator	$z = \pm(10.9, 14.4)$ m	ns	monitoring
BCM1F	sCVD diamond	$z = \pm 1.8$ m	ns	mon./prot.
BPTX	beam pickup	$z = \pm 175$ m	200 ps	monitoring



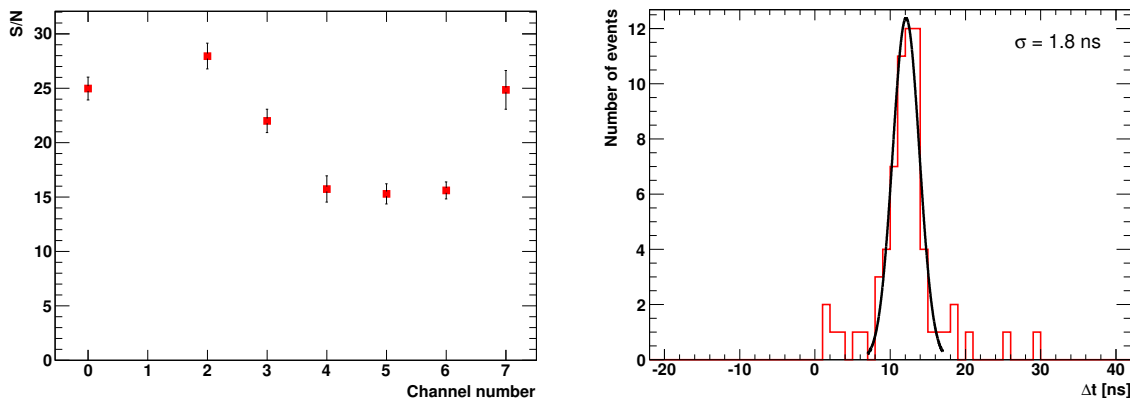
**Figure 2.** Schematic of the BCM1F readout chain (not to scale). (Left) Front-end module, including sensor, pre-amplifier, and optical driver; through the lowpass filter, test pulses can be injected. (Right) Signal processing units of the back-end in the counting room.

independently of the LHC power supply and the CMS data acquisition and must be active whenever there might be beam in the LHC.

## 2 The Fast Beam Conditions Monitor, BCM1F

**Conceptual design.** Four modules, consisting of sensor, pre-amplifier, and optical driver, are arranged around the beam pipe on either detector side at distances of 4.5 cm from the beam axis and  $\pm 1.8$  m from the IP. They measure the flux of beam halo particles as well as of collision products, thereby providing *CMS Background 1* for the LHC control. Particularly radiation-hard components are needed in this situation. Additional requirements are low power dissipation and excellent time resolution in order to detect single relativistic charged particles with a time resolution better than the time between bunch crossings [4].

**Readout chain and data acquisition.** The sensors are single-crystal chemical vapour deposition (sCVD) diamonds of the size  $5 \text{ mm} \times 5 \text{ mm} \times 400 \mu\text{m}$ . They are metallised on both sides and operated as solid state ionisation chambers, as illustrated in figure 2. Charge-sensitive, radiation-hard amplifier ASICs of the type JK16 [5] collect the charges induced and shape proportional signals.



**Figure 3.** Performance of BCM1F with first LHC beams in September 2008. (Left) Signal-to-noise ratio of the channels. (Right) Time resolution of the system.

These are transmitted to the counting room as optical signals, converted back to electrical signals, and processed and analysed by several back-end components. The analogue signals are fed into a discriminator that supplies scalers and time-to-digital converters (TDC) with logical signals. An analogue-to-digital converter (ADC) samples the input voltages to obtain digitised signal images.

Data acquired by all these readout devices are processed immediately. Relevant results are displayed in the control room and passed on to the central CMS data acquisition. Raw data are stored permanently on disk for offline analyses.

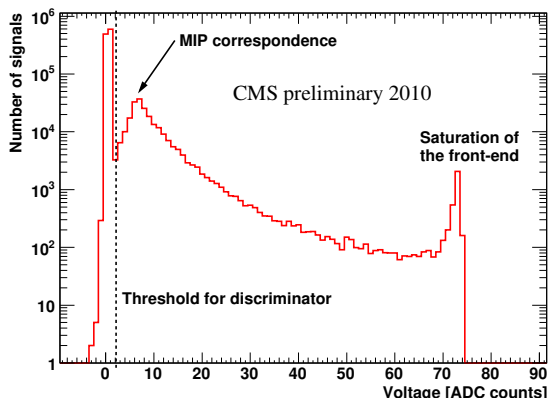
**Results obtained with first beams.** Digitised signals from the ADC are used to understand the performance of the system. It entirely meets the expectations as could be proved already in the first runs of LHC in 2008. The plots in figure 3 show the signal-to-noise ratio of the detectors<sup>1</sup> and a time resolution measurement [6]. The latter was taken while only one beam was circulating and shows the time difference between signals from sensors at opposite detector planes and equal azimuthal positions. The mean value of 12 ns corresponds perfectly to the time of flight of relativistic particles for 3.6 m, and a standard deviation of  $\sigma = 1.8$  ns results in a time resolution of 1.3 ns.

### 3 Performance and prospects of BCM1F

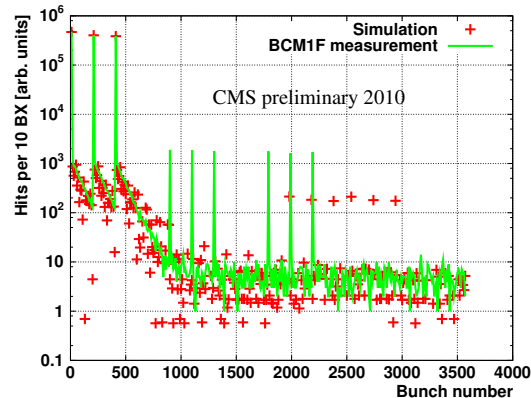
#### 3.1 Signal spectra from the ADC

ADC data have been invaluable for the commissioning of the system. They facilitate maintenance and can deliver online information as well. The pulse height spectrum of signals taken in a run with colliding bunches is displayed in figure 4 for ADC input channel 0. The trigger used for this measurement is an analogue sum of all BCM1F channels. Therefore, a fraction of the events contains the baseline in this channel, which accumulates to the pedestal peak at about zero pulse height. The maximum position of the signal peak is considered the pulse height for single relativistic particles

<sup>1</sup>Channel 1 had a faulty cable in 2008. Meanwhile, this has been replaced, and Channel 1 delivers data as well.



**Figure 4.** Pulse height spectrum obtained from the ADC to find discriminator thresholds from the local minimum between the pedestal (left peak) and the MIP signals. The third peak at high voltages is caused by signals in saturation.



**Figure 5.** Bunch structure over the LHC orbit monitored with the TDC (green line) and simulated using FLUKA (red markers). A statistical effect not related to bunches lead to six outlying markers between bunch numbers 2000 and 3000.

(MIP correspondence).<sup>2</sup> The local minimum between those peaks is used to determine the optimal threshold to be set in the discriminator.

The third peak as well as the adjacent cut at the upper end of the spectrum result from a limitation of the front-end electronics. At a pulse height of about ten times the MIP amplitude, the output signal of the laser driver goes into saturation.

### 3.2 Timing information from the TDC

The arrival times of hits in BCM1F are recorded with the TDC. Given the spacing of 24.95 ns between potential bunch crossings, time can be converted into a bunch number within the LHC orbit. An example of the count rate as a function of the bunch number is displayed in figure 5. The first three peaks, corresponding to colliding bunches, exhibit very high count rates and long tails up to the  $\mu\text{s}$  range. Both effects are caused by collision products. The peaks around bunch number 1000 and 2000, respectively, represent the three non-colliding bunches of each beam. No tails are observed here.

A simulation has been performed [7] using FLUKA [8] to understand the reasons for the long tails of colliding bunches.<sup>3</sup> The results agree well with the data, as can be seen in figure 5, and confirm that, in addition to collision products and beam halo, also delayed signals from electrons, photons, and neutrons contribute to the count rates.

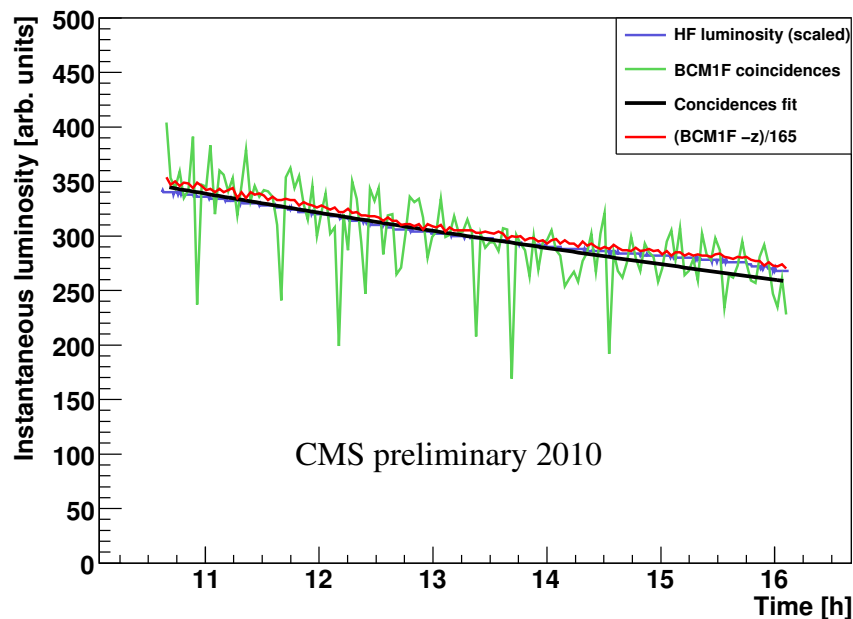
### 3.3 Online analysis with scalers

The output signals of the discriminator are also fed into scalers and a freely programmable logic unit, see figure 2. The unit's FPGA is programmed as a look-up table (LUT) to match pairs of BCM1F modules opposing with respect to the IP. Coincidences of signals in such back-to-back

<sup>2</sup>The energy of relativistic particles will usually be larger than the energy of minimum ionising particles (MIPs), thus their energy loss will be slightly larger than that of MIPs. This effect is ignored here.

<sup>3</sup>The simulation is normalised to the data and does not include non-colliding bunches.





**Figure 6.** Comparison of the luminosity measured by HF with count rates from BCM1F.

modules are assumed to be caused by elastic scattering in the collisions. Corresponding logical coincidence signals are counted by the scalers as well. In figure 6, the overall coincidence rate and the luminosity measured by the hadronic forward calorimeter (HF) are plotted against time. The HF result (blue line) has been scaled to the BCM1F coincidence rate (green line), which has been fit (black line) in order to compare the slopes. In addition, the scaled count rate of BCM1F on the  $-z$  side is shown (red line). We observe a reasonable agreement between the three lines, demonstrating the potential of BCM1F to be used as a fast luminosity monitor.

## References

- [1] The CMS collaboration, *The CMS experiment at the CERN LHC*, 2008 *JINST* **3** S08004.
- [2] Alan. J. Bell on behalf of the BRM group, *Beam & Radiation Monitoring for CMS*, *IEEE Nucl. Sci. Symp. Conf. Rec.* (2008) 2322–2325.
- [3] A. Macpherson, *Beam Conditions and Radiation Monitoring at the LHC Experiments*, *Proceedings LHC Project Workshop, Chamonix XV* (2006) p. 198.
- [4] R. Hall-Wilton, W. Lange, A. Macpherson, V. Ryjov and R.L. Stone, *Fast beam conditions monitor (BCM1F) for CMS*, *IEEE Nucl. Sci. Symp. Conf. Rec.* (2008) 3298.
- [5] J. Kaplon and W. Dabrowski, *Fast CMOS binary front end for silicon strip detectors at LHC experiments*, *IEEE Trans. Nucl. Sci.* **52** (2005) 2713.
- [6] A.J. Bell et al., *Fast beam conditions monitor BCM1F for the CMS experiment*, *Nucl. Instrum. Meth. A* **614** (2010) 433.
- [7] S. Müller on behalf of the CMS collaboration, *Impact of beam-induced backgrounds for the CMS Pixel and other inner radii detectors (Simulation and Data)*, *Nucl. Instrum. Meth.* article in press;

S. Müller, *Design, Commissioning and Performance of the CMS Beam Condition Monitor 2 and Simulation Studies of the Radiation Environment near CMS at LHC*, Ph.D. Thesis in Preparation (2010), CERN/KIT Karlsruhe.

- [8] A. Fasso, A. Ferrari, J. Ranft and P.R. Sala, *FLUKA: a multi-particle transport code*, CERN-2005-10, INFN/TC\_05/11, SLAC-R-773 (2005).

2011 JINST 6 C01004